



MASSACHUSETTS
GENERAL HOSPITAL

CANCER CENTER



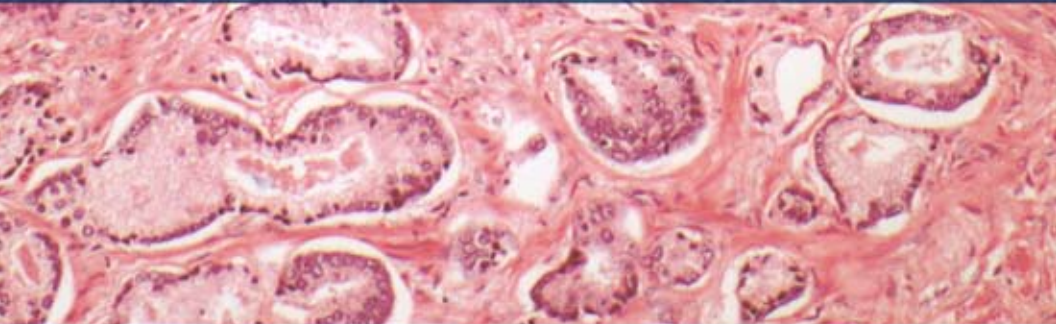
HARVARD
MEDICAL SCHOOL




哈佛大学麻省总医院泌尿肿瘤奖学金计划，一个面向中国泌尿科医师的培训机会\

GENITOURINARY ONCOLOGY FELLOWSHIP FOR PHYSICIANS IN CHINA

A Multidisciplinary Clinical and Research Training Opportunity at
Massachusetts General Hospital Cancer Center



**YAWKEY CENTER
FOR OUTPATIENT CARE**

 MASSACHUSETTS
GENERAL HOSPITAL



Genitourinary Oncology Fellowship for Physicians in China

The Genitourinary Oncology Fellowship for Physicians in China was created to provide urologists and other uro-oncologists in China, i.e., medical oncologists and radiation oncologists, with a unique opportunity to observe clinical activities and conduct research with a multidisciplinary team of genitourinary oncology specialists within the Massachusetts General Hospital Cancer Center.

Massachusetts General Hospital is one of the most highly respected academic medical centers in the world. Renowned internationally for its superb clinical care, the 900-bed hospital offers diagnostic and therapeutic services in virtually every specialty and subspecialty of medicine and surgery.

In addition to providing clinical care, Mass General conducts the largest hospital-based research program in the U.S., and is the oldest and largest teaching affiliate of Harvard Medical School. The Cancer Center at Massachusetts General Hospital is comprised of 20 clinical centers, including the Claire and John Bertucci Center for Genitourinary Cancers.

The Genitourinary Oncology Fellowship for Physicians in China was established in 2009. This program is the successor to the Ribakoff Fellowship in Genitourinary Oncology (2004-2008).

In recognition of the important relationship between Mass General Cancer Center physicians and urologists in China, leaders in the Mass General genitourinary cancers program, Dr. Donald S. Kaufman, director of the Claire and John Bertucci Center for Genitourinary Cancers, Dr. Scott McDougal, chief of Urology, and Dr. Chin-Lee Wu, associate professor of Pathology and director of the Urology Research Laboratory, established the Fellowship Program in 2009.

Designed to provide advanced training for China's most promising young uro-oncologists, successful applicants spend three to six months at Mass General, working with the Cancer Center's multidisciplinary genitourinary oncology team as clinical practice observers and as full participants in scholarly research, all under the supervision of Mass General/Harvard faculty members.



THE FELLOWSHIP EXPERIENCE

The Claire and John Bertucci Center for Genitourinary Cancers was established in 2005 as the cornerstone of genitourinary oncology care, teaching and clinical research at Massachusetts General Hospital Cancer Center. Located in the Yawkey Center for Outpatient Care, a faculty of medical oncologists, radiation oncologists and urologists, with the support of diagnostic radiologists and pathologists, provides excellent patient care in a multidisciplinary setting.

Each year, four to six positions for the Genitourinary Oncology Fellowship for Physicians in China will be offered to urologists, urologic medical oncologists, urologic radiation oncologists and other specialists in uro-oncology in China.

The duration of the fellowship is usually for a period of three months. A longer duration of stay will be considered for those who have special clinical or research interests.

The Genitourinary Oncology Fellowship for Physicians in China gives trainees the opportunity to:

- Observe a diverse range of diagnostic and therapeutic clinical activities with urologic surgeons, medical oncologists, radiation oncologists, diagnostic radiologists and pathologists, all committed to practice, teaching and research in various aspects of genitourinary oncology
- Participate in clinical and research lectures, conferences and didactic presentations
- Conduct hands-on basic or clinical research resulting in publication of a research paper at the completion of the fellowship



THE CLINICAL COMPONENT

Participating physicians will have the opportunity to observe urologic surgery in the operating rooms, outpatient care in the urology clinic and patient consultation sessions at the Bertucci Center. In keeping with the Center's multidisciplinary, integrated approach to cancer treatment, the trainees will have the opportunity to observe urologic clinical work offered by medical oncologists, radiation oncologists, radiologists and pathologists.

Fellows will have the opportunity to observe the full range of the most advanced diagnostic and therapeutic options available to patients with genitourinary cancers, some of which are unique to Massachusetts General Hospital.

These include:

- **The most advanced surgical techniques**, such as laparoscopic radical prostatectomy, radiofrequency ablation of kidney tumors, laser ablation in the treatment of benign prostatic hypertrophy (BPH), and an important organ-sparing approach utilizing a combination of limited surgery, radiation therapy and chemotherapy, which was developed at Mass General for the treatment of muscle-invasive bladder cancer
- **The latest screening and diagnostic procedures**, including PET, SPECT, MR spectroscopy and urologic endoscopy
- **The latest radiation therapies**, including proton beam therapy (Massachusetts General Hospital has one of six comprehensive proton therapy centers in the U.S.), intraoperative radiation therapy, ultrasound-guided brachytherapy and 3-D conformal and intensity-modulated radiation therapy
- **Innovative medical treatments**, including numerous investigational chemotherapeutic research studies and hormonal studies
- **An active surveillance protocol** offered to carefully-selected patients with early stage prostate cancer.



THE RESEARCH COMPONENT

The research component gives fellows the opportunity to participate in a wide range of basic and/or clinical research activities relating to their interests. Areas of ongoing research in which fellows might wish to participate include:

Urology

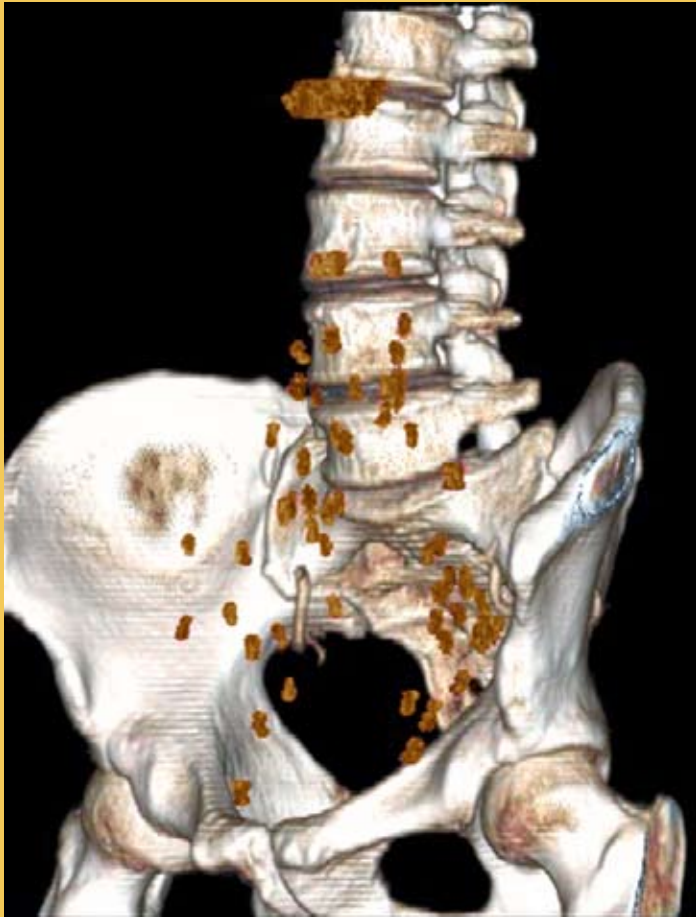
- Biomarkers for bladder and prostate cancers
- Gene microarray analyses of prostate and bladder cancers
- Laparoscopic and open prostatectomy outcomes
- MRI studies of genitourinary malignancies
- Radiofrequency ablation of renal tumors

Radiation Oncology

- Outcome analyses of bladder and prostate cancer clinical trials
- Basic research in radiation biology
- Numerous translational research projects
- Molecular and genetic profiling of bladder tumors to direct treatment
- Outcome analyses of bladder function after bladder-conserving treatment
- Quality-of-life analyses in prostate cancer patients treated with conformal protons

Medical Oncology

- Outcome research in prostate cancer and bladder cancer
- Bladder preservation in the treatment of muscle-invasive bladder cancer
- Innovative drugs and drug regimens for advanced bladder and prostate cancers
- Effects of GnRH agonists on bone and body composition
- New biologic agents for kidney cancer
- Serum tumor markers
- Bone metabolism in kidney cancer patients and new biologic agents for kidney cancer
- Molecular basis of renal cell carcinoma



Composite image of lymph nodes in prostate cancer using nanoparticle-enhanced MRI



FACULTY

Fellows will have the opportunity to interact regularly with senior clinicians throughout the Massachusetts General Hospital Cancer Center.

Key faculty of the Genitourinary Oncology Fellowship for Physicians in China are:

Department of Medicine / Division of Hematology and Medical Oncology

Donald S. Kaufman, MD

Director, Claire and John Bertucci Center for Genitourinary Cancers

Richard J. Lee, MD, PhD

M. Dror Michaelson, MD, PhD

Matthew R. Smith, MD, PhD

Department of Pathology

Chin Lee Wu, MD, PhD

Director, Urology Research Laboratory

Robert H. Young, MD

Department of Radiology

Mukesh G. Harisinghani, MD

Peter R. Mueller, MD

Department of Radiation Oncology

John J. Coen, MD

Jason A. Efstathiou, MD, DPhil

William U. Shipley, MD

Anthony L. Zietman, MD

Department of Urology

W. Scott McDougal, MD

Chief, Department of Urology

Douglas M. Dahl, MD

Adam S. Feldman, MD

Niall M. Heney, MD

Aria F. Olumi, MD

Shahin Tabatabaei, MD



ELIGIBILITY

Urologists in China who are university faculty members or hospital staff members and have an interest in the subspecialty of genitourinary cancers are eligible to apply.

Fellows are responsible for travel expenses. A monthly stipend is offered to help defray living expenses.

TO APPLY

To apply, please submit the following documents:

- Recommendation of applicant's supervisor/department chairperson
- Curriculum vitae

Please send your application materials to:

Donald S. Kaufman, MD
Genitourinary Oncology Fellowship for Physicians in China
Massachusetts General Hospital Cancer Center
Yawkey Center for Outpatient Care, Suite #7E
55 Fruit Street
Boston, MA 02114 USA
E-mail: dskaufman@partners.org

Please direct all questions to Dr. Kaufman at the e-mail address above. Applications will be acknowledged by email when completed.

Application deadline:

Applications must be received by June 1 for fellowships to begin the following year.

All applicants will be notified on July 1 of each year.

Fellows will begin the fellowship training at a time that is convenient to both the trainees and the program and will be coordinated through Dr. Scott McDougal's office.



MASSACHUSETTS GENERAL HOSPITAL CANCER CENTER

An integral part of one of the world's most distinguished academic medical centers, the Massachusetts General Hospital Cancer Center is among the leading cancer care providers in the United States.

U.S. News and World Report consistently ranks the Mass General Cancer Center as one of the top ten cancer centers in the country. Its nurses were the first in Massachusetts to achieve Magnet status in recognition of the hospital's exceptional nursing care.

Known for providing customized, innovative treatments and compassionate care to both adults and children, the Cancer Center comprises 20 fully integrated, multidisciplinary clinical programs and a vast array of support and educational services. Its network of affiliations extends throughout New England and the southeastern U.S.

The Cancer Center's commitment to eradicating cancer is fueled by scientific investigation conducted as part of one of the largest hospital-based research programs in the nation. Through a powerful synergy between laboratory scientists and bedside physicians, the Mass General Cancer Center fosters innovation in all phases of cancer research. Physician investigators conduct more than 350 clinical trials annually.

The Massachusetts General Hospital Cancer Center is proud to be a founding member of the DF/HCC, a Harvard Medical School consortium designated by the National Cancer Institute as a comprehensive cancer center. This prestigious seven-member center forms the largest cancer research collaboration in the country. The promising new treatments developed through this partnership are revolutionizing the future of cancer medicine.

The Bulfinch Building at Massachusetts General Hospital, the oldest and largest teaching hospital of Harvard Medical School ►



Fellowship Committee

W. Scott McDougal, MD, Chairman

Donald S. Kaufman, MD

Chin-Lee Wu, MD, PhD

Address all application correspondence to:

Donald S. Kaufman, MD

Genitourinary Oncology Fellowship for
Physicians in China

Massachusetts General Hospital Cancer Center

Yawkey Center for Outpatient Care, Suite 7E

55 Fruit Street

Boston, Massachusetts 02114 USA

E-mail: dskaufman@partners.org



MASSACHUSETTS
GENERAL HOSPITAL

CANCER CENTER

A FOUNDING MEMBER OF  PARTNERS.
HEALTHCARE



HARVARD
MEDICAL SCHOOL

Genitourinary Oncology Fellowship for Physicians in China
Massachusetts General Hospital Cancer Center
55 Fruit Street
Boston, Massachusetts 02114 USA

www.massgeneral.org/cancer

