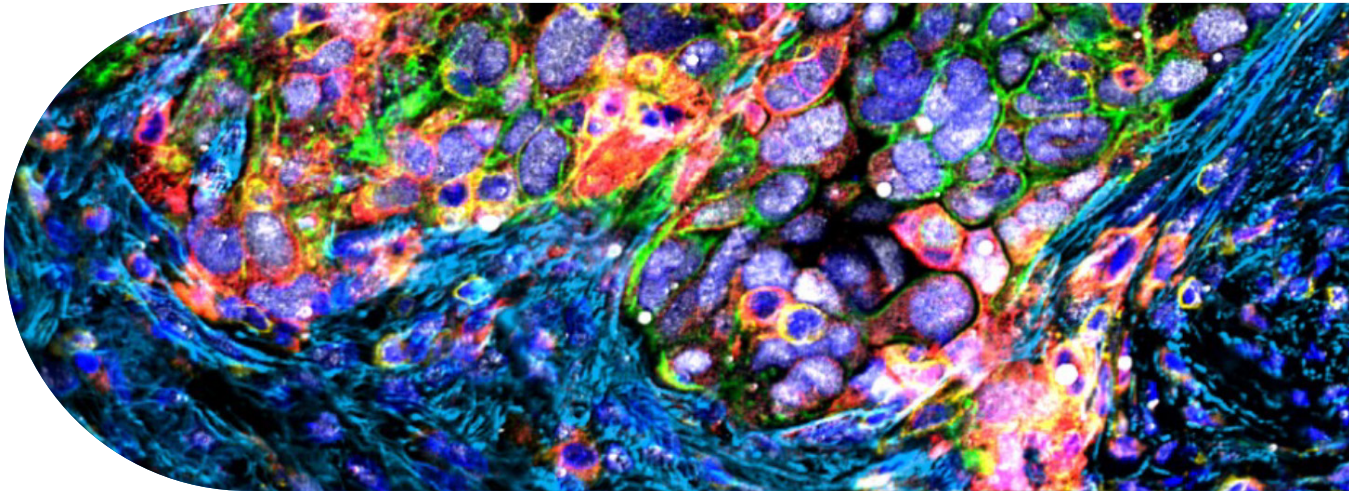


Jonathan Kraft Prize for Excellence in Cancer Research



Keynote Speaker

Scott W. Lowe, PhD

Memorial Sloan Kettering Cancer Center

**Targeting the intersection between
senescence and cancer**

Thursday, May 28, 2026, 1:30 – 5:30pm

Simches 3110 Auditorium, Simches Building 3rd Floor
185 Cambridge Street, Boston, MA 02114

Symposium Chair

Shyamala Maheswaran, PhD

Symposium Speakers

Cristina Aguayo-Mazzucato, MD, PhD

Shawn Demehri, MD, PhD

Zhixun Dou, PhD

Christopher D. Wiley, PhD

Symposium

Contact: Sophia Sid | ssid@mgh.harvard.edu | 617.726.6015



Mass General Brigham
Cancer Institute

Jonathan Kraft Prize for Excellence in Cancer Research

AGENDA, Thursday, May 28, 2026

- 1:30 pm **Welcome and opening remarks**
Daniel A. Haber, MD, PhD
Director, Krantz Family Center for Cancer Research
- Introductions**
Shyamala Maheswaran, PhD
Symposium Chair
- 1:40 pm **“Nuclear degeneration in cellular senescence and chronic inflammation”**
Zhixun Dou, PhD
- 2:10 pm **“Fatty acid metabolism in senescent cells, a matter of life and death”**
Christopher D. Wiley, PhD
- 2:40 pm **Break** _____
- 3:00 pm **“Virome immunity role in senescent cell clearance”**
Shawn Demehri, MD, PhD
- 3:30 pm **“Senotype blueprint of the human endocrine pancreas”**
Cristina Aguayo-Mazzucato, MD, PhD
- 4:00 pm **Break** _____
- 4:20 pm **Keynote Speaker Introduction & Prize Presentation**
Daniel A. Haber, MD, PhD
- 4:30 pm **Keynote Address** _____
- “Targeting the intersection between senescence and cancer”**
Scott W. Lowe, PhD
Chair, Cancer Biology & Genetics Program, Sloan Kettering Institute
Memorial Sloan Kettering Cancer Center
Investigator, Howard Hughes Medical Institute