

Massachusetts General Hospital Overview

Mission

Guided by the needs of our patients and their families, we aim to deliver the very best health care in a safe, compassionate environment; to advance that care through innovative research and education; and to improve the health and well-being of the diverse communities we serve.



Credo

As a member of the MGH community and in service of our mission, I believe that:

- The first priority at MGH is the well-being of our patients, and all our work, including research, teaching and improving the health of the community, should contribute to that goal.
- Our primary focus is to give the highest quality of care to each patient delivered in a culturally sensitive, compassionate and respectful manner.
- My colleagues and I are MGH's greatest assets; understanding and valuing our differences helps us excel.
- Teamwork and clear communication are essential to providing exceptional care.

As a member of the MGH community and in service of our mission, I will:

- Provide compassionate, equitable, and patient centered care.
- Listen and respond to patients, patients' families, caregivers, colleagues and community members.
- Ensure that the MGH is safe, accessible, inclusive and welcoming to everyone.
- Share my successes and errors with my colleagues so we can all learn from one another.
- Make wise use of the hospital's human, financial and environmental resources.
- Be accountable for my actions.
- Uphold professional and ethical standards.



Boundaries Statement

As a member of the MGH community and in service of our mission, I will never:

- Knowingly ignore MGH policies and procedures.
- Criticize or take action against any member of the MGH community raising or reporting a safety concern.
- Speak or act disrespectfully toward anyone.
- Engage in, tolerate or fail to address abusive, disruptive, discriminatory or culturally insensitive behaviors.
- Look up or discuss private information about patients or staff for any purpose outside of my specified job responsibilities.
- Work while impaired by any substance or condition that compromises my ability to function safely and competently.



Original Campus

- Third oldest general hospital in America
- Chartered in 1811 by an act of the state legislature



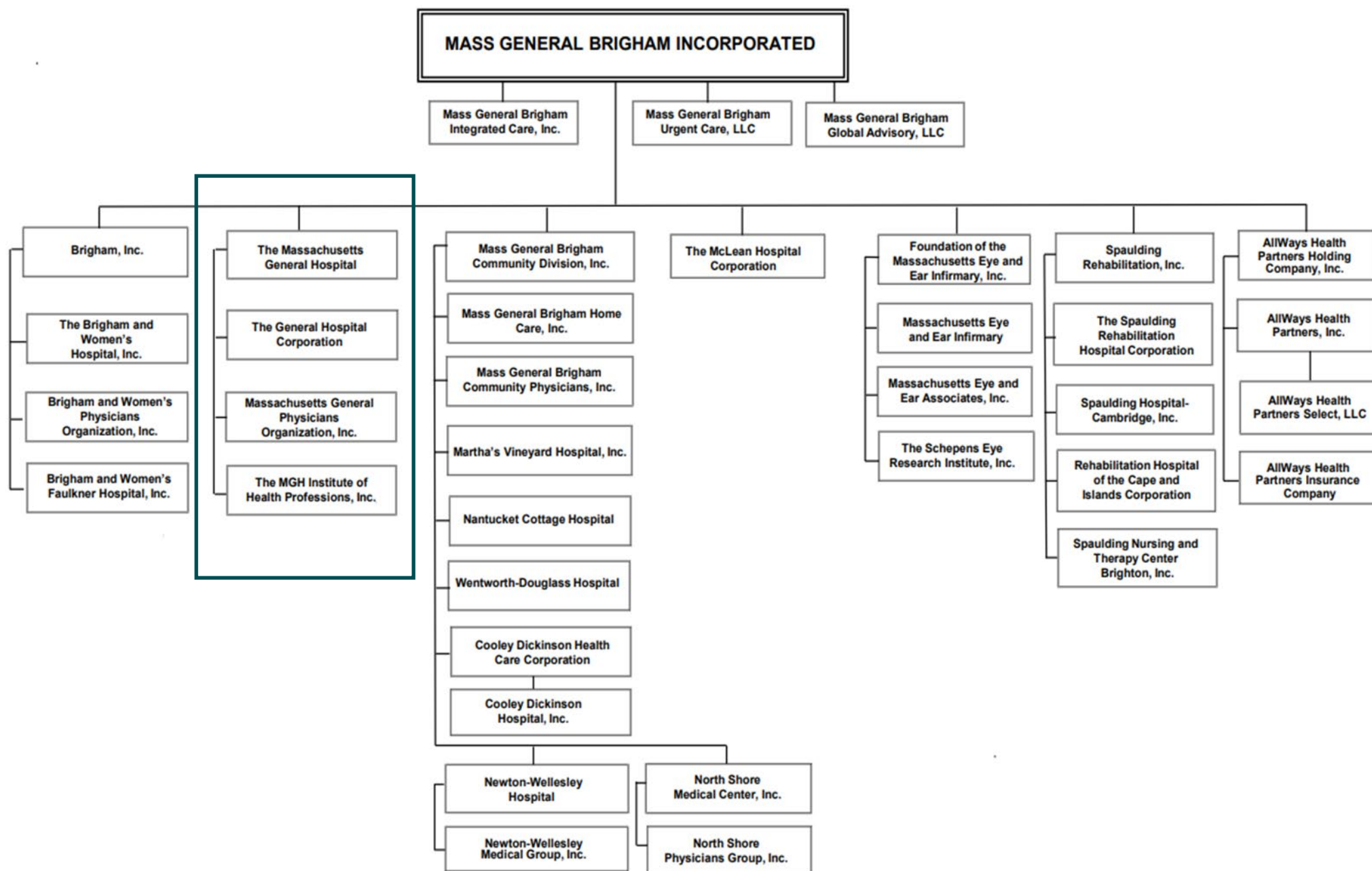
Current Campus (*almost*)



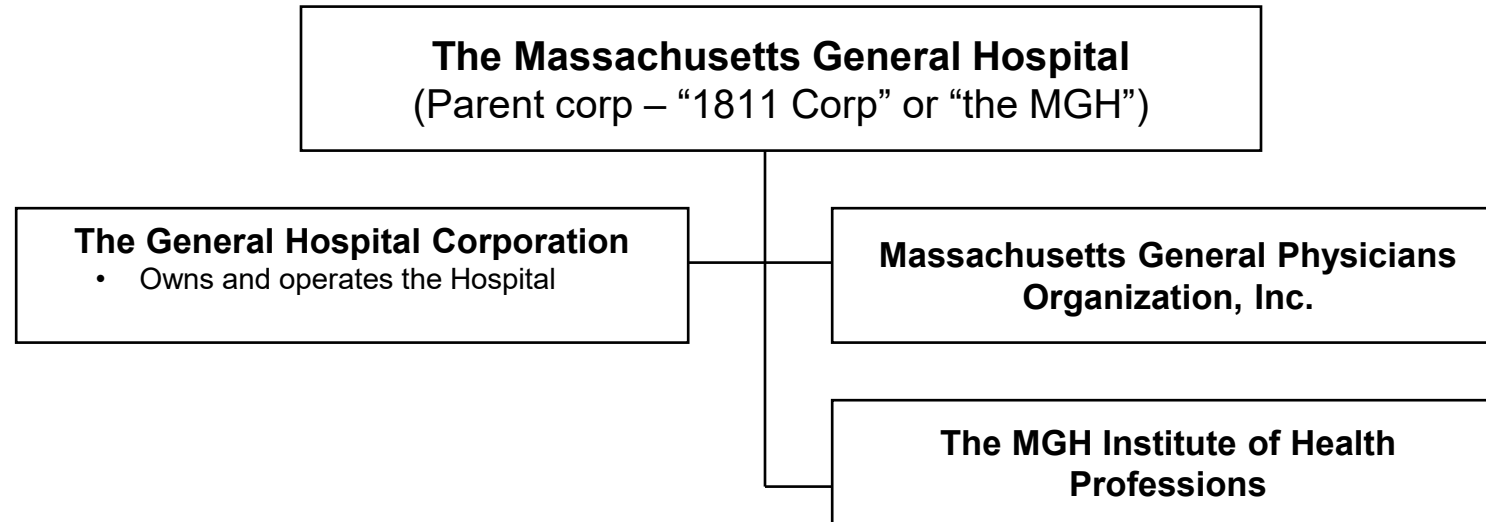
Future – Cambridge Street Project



CORPORATE ORGANIZATION CHART OF MASS GENERAL BRIGHAM



MGH Structure



Snapshot – Clinical Care

- MGH is organized into **20 clinical departments**, each with a chief who reports jointly to the president of the MGH and the president of the Massachusetts General Physicians Organization (MGPO). Academic programs report through the department heads while clinical operations report through the MGH COO (who reports to the system COO).
- **MassGeneral Hospital for Children** is a leader in the delivery of family centered care and provides a full range of primary and specialty care across the spectrum of care settings.
- **5 multidisciplinary care centers** – in cancer, digestive health, heart disease, transplantation, and vascular medicine – unite specialists across departments to offer patients optimally organized, comprehensive care for these complex conditions.
- MGH is designated as a **Magnet hospital**, the highest honor for nursing excellence awarded by the American Nurses Credentialing Center.



Snapshot – Research



- MGH is home to the largest hospital-based research enterprise in the U.S.
- The Mass General Research Institute comprises more than 8,500 researchers working across more than 30 institutes, centers and departments.
- An annual research budget of \$1.3B in FY22
- Ranked #1 among healthcare research organizations by Nature Index in article count (2020)

Everyone working at Mass General contributes to the research mission

Snapshot – Education

- **Physician Trainees**

- Residency training in 30 specialties with 986 total residents
- Fellowships in 139 subspecialties with 510 total fellows, which includes Clinical Psychology and integrated programs
- Original teaching hospital of Harvard Medical School

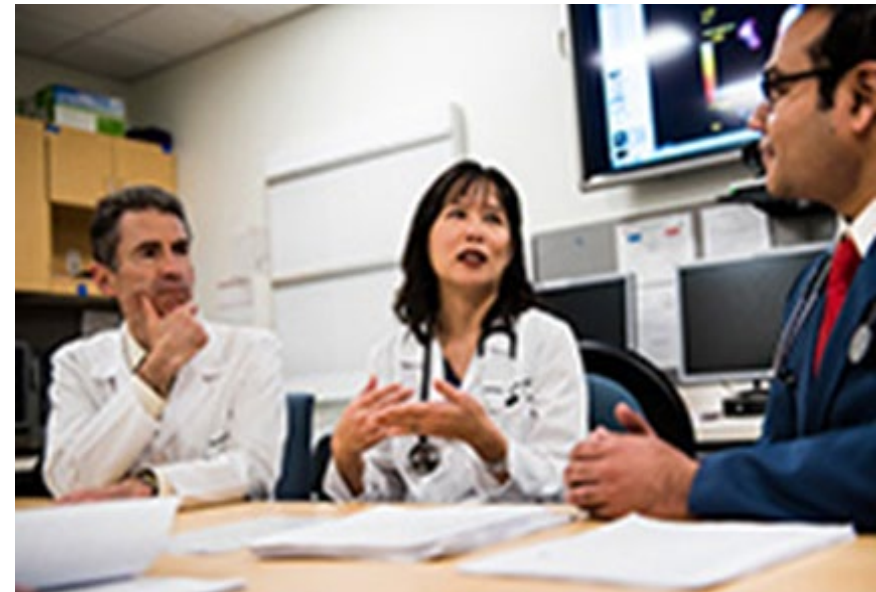
- **MGH Institute for Health Professions**

- **Nursing & Allied Health**

- Numerous training opportunities across disciplines

- **Continuing Education**

- Knight Nursing Center for Clinical & Professional Development
- MGH Leadership Academy
- MGH Learning Laboratory (Simulation)



Snapshot – Community Health

- Center for Community Health Improvement
- Kraft Center for Community Health
- Center for Gun Violence Prevention
- Center for Global Health
- Center for the Environment & Health

Awards -

- Foster G. McGaw Prize
- Spencer Foreman Award for Outstanding Community Service

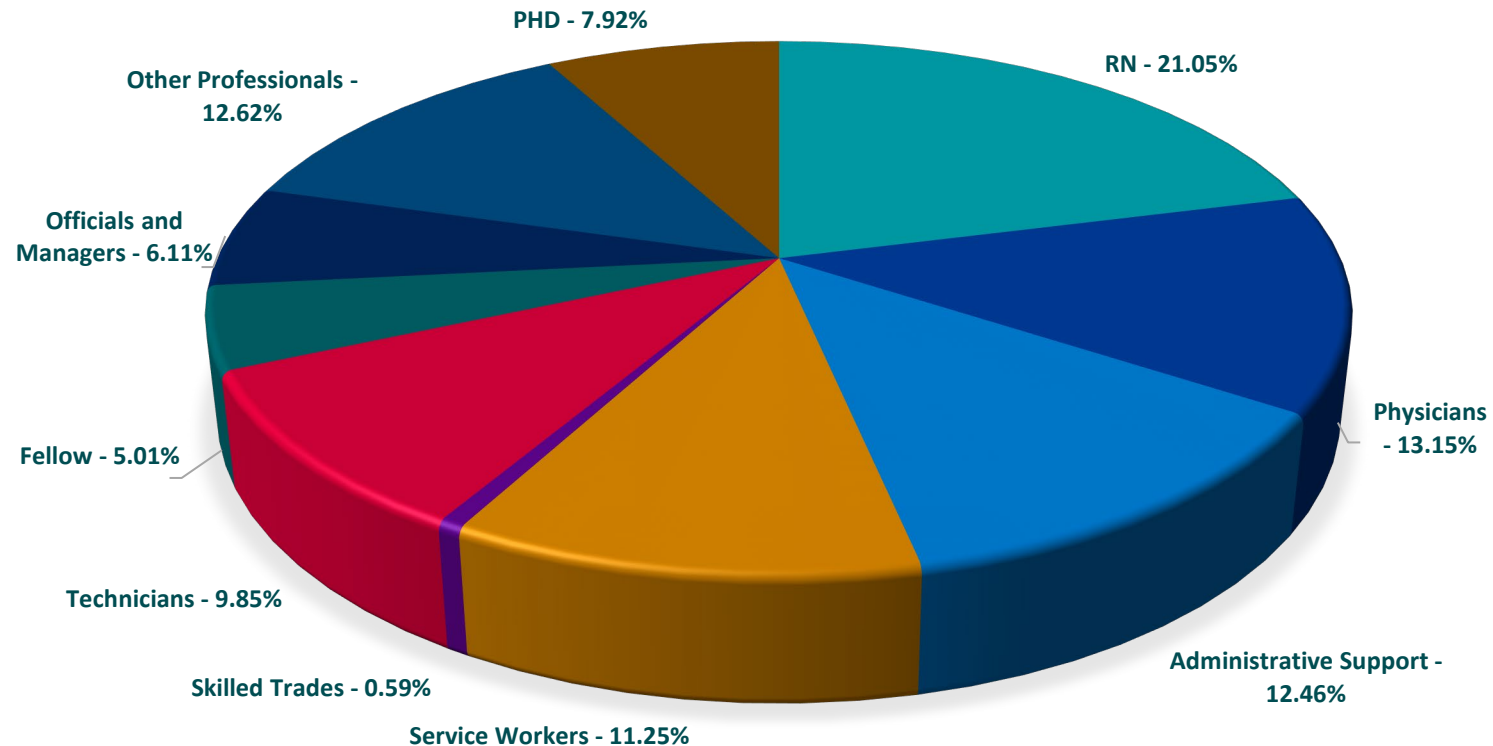


Appendix



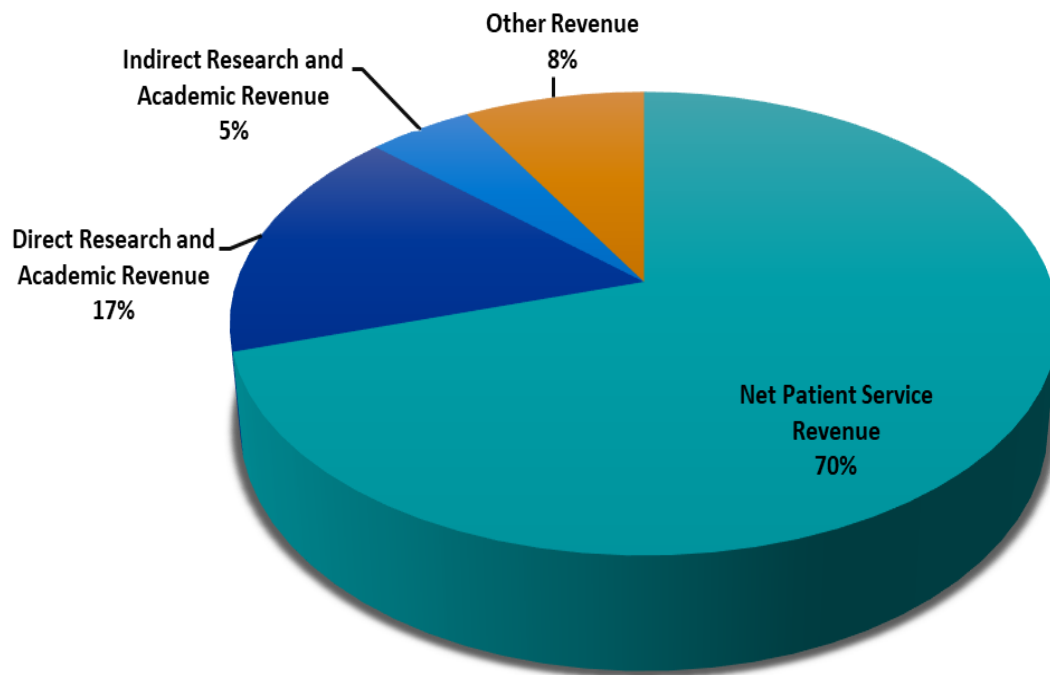
MGH Employee Statistics

29,138 Employees • Largest Private Employer in Boston
October 2021



Snapshot - Financials

Hospital, Research, & PO Combined Revenue
Total Operating Revenue = \$6.1B



Hospital, Research, & PO Combined Expenses
Total Expense = \$5.8B

