



Mass General Brigham

Mass General Research Institute

Mass General Research Institute

Robert E. Kingston, PhD, Chief Academic Officer

Susan A. Slaughaupt, PhD, Scientific Director

Judy W. Hung, MD, Director, Division of Clinical Research



HARVARD MEDICAL SCHOOL
TEACHING HOSPITAL

MGH Research Training and Education Survey

- The survey assists in creating a training program tailored to your job role
- Research training survey is required by all employees in research or research support roles and must be completed after leaving orientation today
- Courses span a variety of topics and may include chemical safety, clinical research conduct, and human subjects training
- The survey can be completed on your smartphone or on a computer

Survey Link:

<https://hub.partners.org/research/surveys/training/>

Need help accessing the survey? Contact team@hub.partners.org



Research Training Survey

MGH Research Institute Hub

Home

MGH Research Institute Hub / Involvement in Research

Involvement in Research

In your job are you engaged in research? (required)

Yes

No

[1] Engaged refers to those who are involved in the conduct of research. For example a research fellow, principal investigator, clinical research coordinator or research assistant would be engaged in the conduct research.

In your job do you provide support to people who are actively engaged in research? (required)

Yes

No

[1] Supporting research refers to those in an analytical, financial or administrative role. For example a grant administrator supports research by managing finances.

Next >>



Research Misconduct

- Research Misconduct Definition
- Regulatory Driven Process
- Increase in Number of Cases (Pub Peer, Clare Francis)
- Lab Archives/Recordkeeping
- Zero Tolerance

If you encounter research misconduct, immediately contact Robert E. Kingston, PhD, Chief Academic Officer rkingston@mgh.harvard.edu

Anyone who comes forward with a research misconduct allegation in good faith – the Complainant – is considered a whistleblower. MGB is required by federal regulation to protect, and is committed to protecting, individuals against retaliation who bring an allegation to the attention of hospital leadership.



Research Compliance

MGH is committed to a culture of compliance by complying with all applicable federal, state, and local laws and regulations. Essential to its success is the adherence to the highest ethical standards to promote, support, and guide research at the hospital.

The Office of Research Compliance supports the research community by providing

- answers to regulatory, policy, and compliance questions,
- education and training,
- assessments and audits, and
- guidance on research issues.

We support all areas of research and look forward to partnering with you to create, promote, and sustain a culture of compliance in which MGH continues to be a leader and example.

Resources

Kelé Piper, Director, MGH Research Compliance

kkpiper@mgh.harvard.edu / 617-726-2111

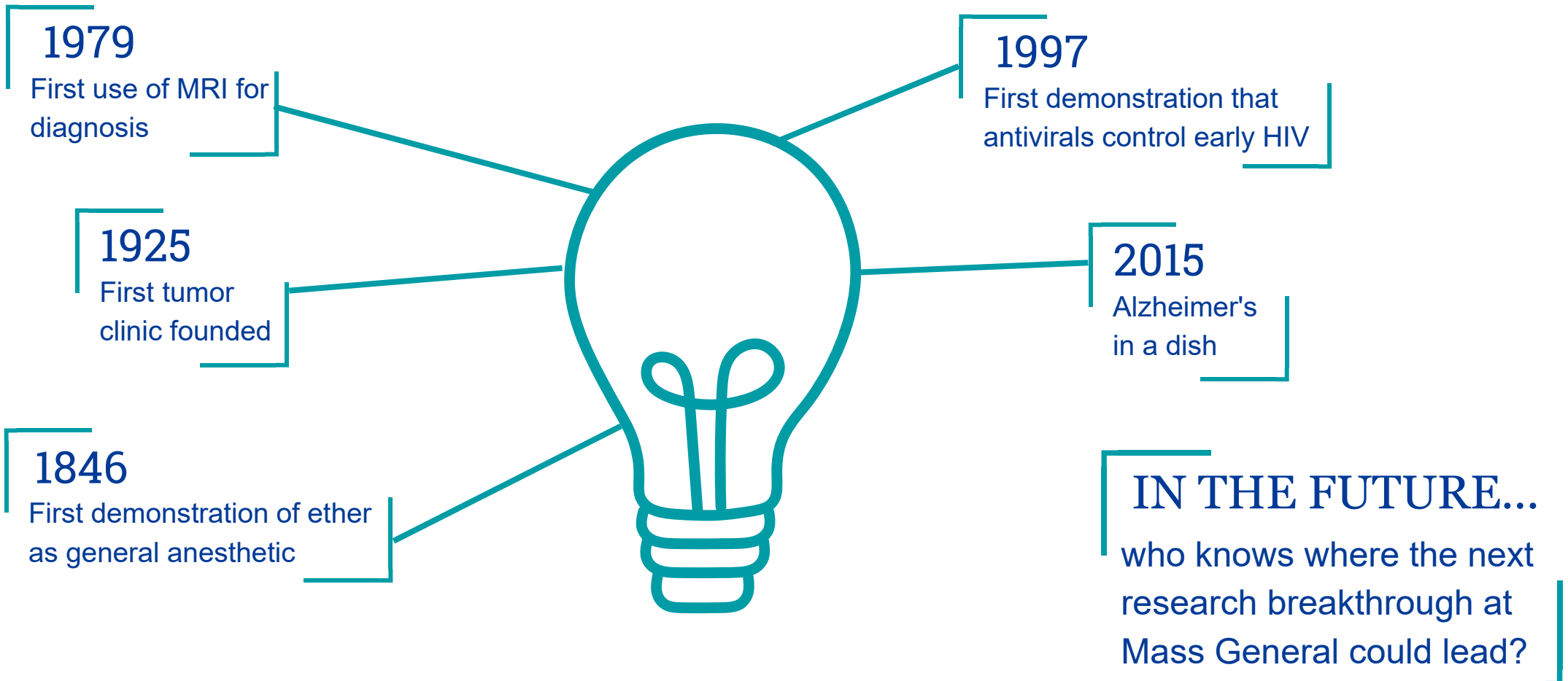
Research Compliance Webpage

http://mghresearch.partners.org/Research_Compliance/ResearchComplianceHome.aspx



Transforming Medicine Through Innovation

Research at MGH began over 200 years ago. Today, the Mass General Research Institute is home to the largest hospital-based research program in the United States.



The Mass General Research Institute is:

- A community of 9,500 people working every day to improve healthcare
 - 2,000 principal investigators leading research teams
 - 4,000 scientists and research staff
 - 1,500 research fellows (postdocs)
 - 800 graduate students
 - 1,200 research administrative support staff
- Over 30 Departments, Centers and Institutes
- Annual research revenue/spending of \$1.3 billion
- Over 1.3 M square feet of research space
- FY22: 1,272 patents filed, \$77.5M royalty/license income
- Over 2,000 active clinical trials ongoing
- Over 500 journal publications per month
- 1/3 of all 3,000 MGH clinicians are research PIs



United by Research. Driven by Hope.



Mass General Brigham

Mass General Research Institute

Executive Committee on
RESEARCH | *Fostering
Innovation
at MGH*

OFFICE OF THE
Scientific Director | *Promoting
Research
at MGH*

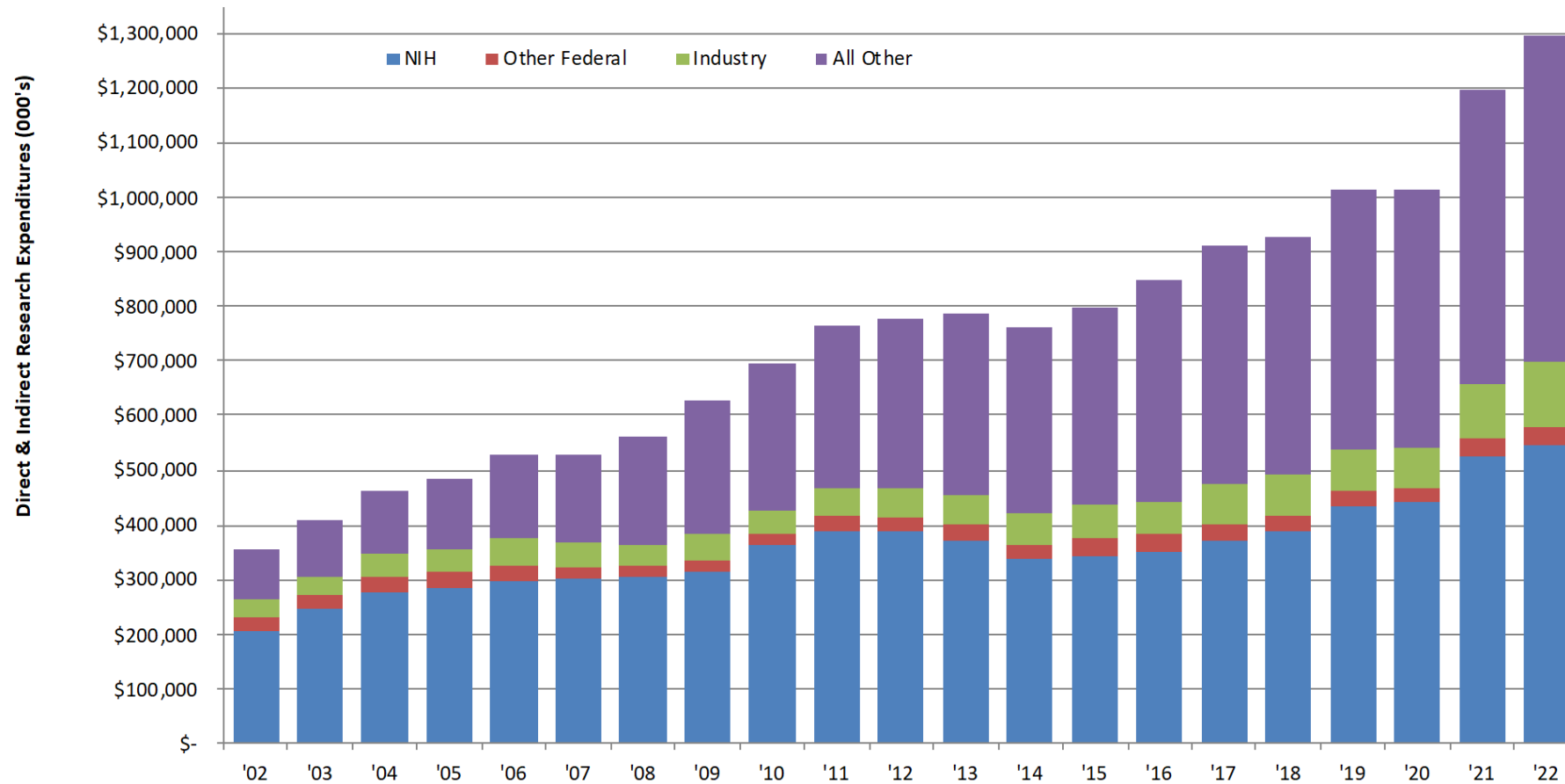
DIVISION OF
Clinical Research | *Translating
Discovery
to Care*

RESEARCH
MANAGEMENT | *Mainstay
of MGH
Innovation*

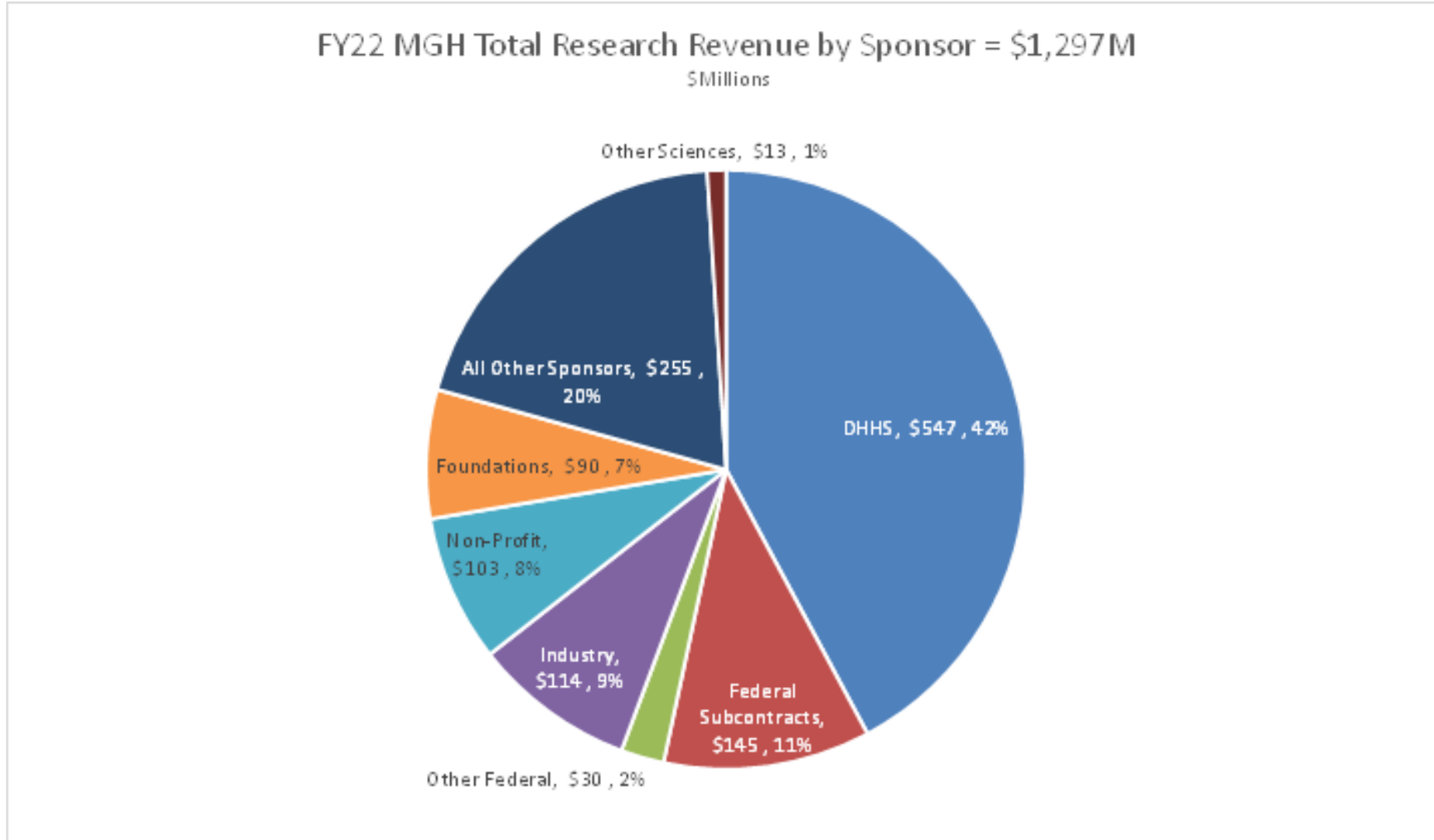


Mass General Total Research Revenue Trend

Mass General Research has grown 263% over 20 years to \$1.3B



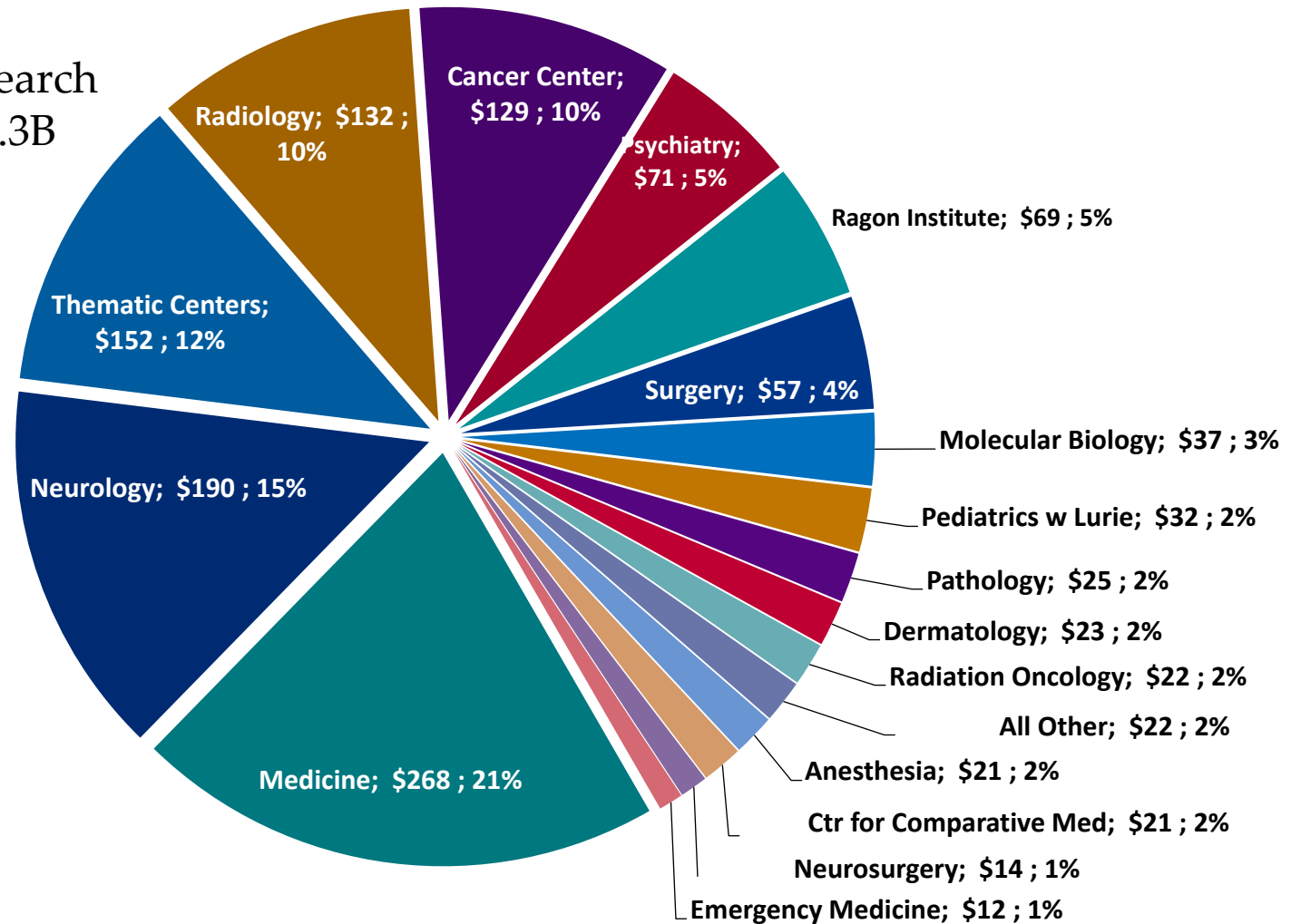
MGH Total Research Revenue by Sponsor w/ Fed Subs



Research Activity, includes Other Science and excludes P&L deductions for capital and reserves. Net P&L revenue is \$1,266M.

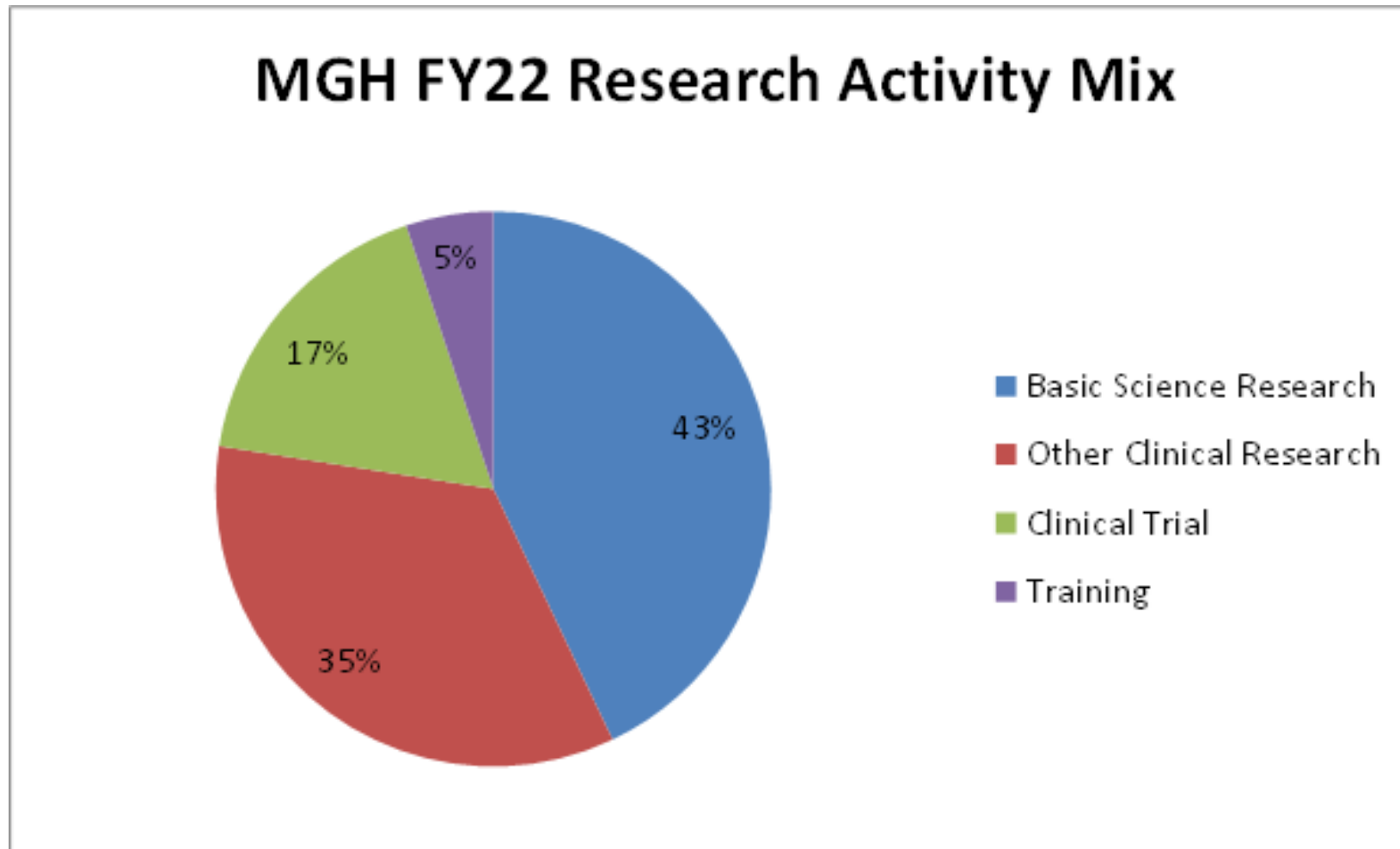
Mass General Total Research Revenue by Department

FY2022 Direct + Indirect Research Revenue by Department = \$1.3B



MGH Total Research Revenue by Activity

FY2022 Direct + Indirect Research Revenue by Activity = \$1,297M



Note: Research Activity, excluding Other Science and P&L deductions for capital and reserves. Net P&L total revenue is \$1,266M.

NIH Funding Rank Trends – All Organizations

FY 2018 - FY 2022 NIH Ranking of Funding to All Institutions

Rank					INSTITUTION	Total Funding					Percent Change				CAGR
FY18	FY19	FY20	FY21	FY22		FY 2018	FY 2019	FY 2020	FY 2021	FY 2022	18-19	19-20	20-21	21-22	18-22
2	2	3	4	1	UNIVERSITY OF CALIFORNIA SAN FRANCISCO	\$647,880,065	\$684,912,356	\$685,608,202	\$709,018,244	\$818,344,088	5.7%	0.1%	3.4%	15.4%	6.0%
1	1	1	1	2	JOHNS HOPKINS UNIVERSITY	\$674,583,550	\$763,565,791	\$807,432,008	\$824,856,274	\$817,967,024	13.2%	5.7%	2.2%	-0.8%	4.9%
4	6	9	11	3	UNIVERSITY OF PITTSBURGH AT PITTSBURGH	\$536,502,831	\$546,388,511	\$570,146,095	\$597,804,833	\$670,055,218	1.8%	4.3%	4.9%	12.1%	5.7%
5	4	8	6	4	UNIVERSITY OF PENNSYLVANIA	\$511,419,097	\$582,337,151	\$593,605,914	\$641,789,096	\$651,241,697	13.9%	1.9%	8.1%	1.5%	6.2%
6	8	10	8	5	STANFORD UNIVERSITY	\$505,474,358	\$526,216,444	\$560,644,462	\$611,354,637	\$649,008,297	4.1%	6.5%	9.0%	6.2%	6.4%
3	3	5	9	6	UNIVERSITY OF MICHIGAN AT ANN ARBOR	\$552,433,992	\$591,487,816	\$641,965,656	\$609,038,367	\$638,797,095	7.1%	8.5%	-5.1%	4.9%	3.7%
7	9	14	7	7	WASHINGTON UNIVERSITY	\$486,295,442	\$523,835,750	\$533,594,881	\$623,444,643	\$617,019,708	7.7%	1.9%	16.8%	-1.0%	6.1%
10	14	11	13	8	COLUMBIA UNIVERSITY HEALTH SCIENCES	\$464,799,343	\$478,662,311	\$558,628,098	\$580,097,026	\$614,638,377	3.0%	16.7%	3.8%	6.0%	7.2%
8	5	7	3	9	DUKE UNIVERSITY	\$475,338,515	\$571,409,121	\$607,172,798	\$731,237,450	\$613,754,425	20.2%	6.3%	20.4%	-16.1%	6.6%
15	15	4	12	10	UNIVERSITY OF CALIFORNIA LOS ANGELES	\$409,733,609	\$451,516,818	\$673,201,228	\$590,125,984	\$592,972,896	10.2%	49.1%	-12.3%	0.5%	9.7%
11	13	16	15	11	UNIVERSITY OF CALIFORNIA SAN DIEGO	\$459,093,333	\$488,194,359	\$524,978,793	\$549,764,120	\$592,859,535	6.3%	7.5%	4.7%	7.8%	6.6%
13	12	13	14	12	YALE UNIVERSITY	\$454,012,666	\$489,089,050	\$550,947,887	\$557,452,201	\$590,009,627	7.7%	12.6%	1.2%	5.8%	6.8%
12	7	15	16	13	UNIVERSITY OF WASHINGTON	\$455,841,035	\$526,962,825	\$533,302,350	\$543,508,259	\$574,666,407	15.6%	1.2%	1.9%	5.7%	6.0%
14	10	17	17	14	UNIVERSITY OF NORTH CAROLINA CHAPEL HILL	\$446,660,231	\$509,869,004	\$511,185,245	\$498,473,940	\$571,776,492	14.2%	0.3%	-2.5%	14.7%	6.4%
9	11	12	10	15	MASSACHUSETTS GENERAL HOSPITAL	\$465,776,958	\$499,645,254	\$551,214,295	\$600,667,106	\$559,532,073	7.3%	10.3%	9.0%	-6.8%	4.7%
17	18	18	18	16	EMORY UNIVERSITY	\$350,444,625	\$382,045,521	\$507,546,965	\$479,575,357	\$548,539,944	9%	32.8%	-5.5%	14.4%	11.9%
23	25	23	27	17	UNIVERSITY OF MINNESOTA	\$277,858,177	\$303,239,238	\$340,417,756	\$336,632,637	\$427,063,298	9.1%	12.3%	-1.1%	26.9%	11.3%
18	17	19	20	18	ICAHN SCHOOL OF MEDICINE AT MOUNT SINAI FRED HUTCHINSON CANCER RESEARCH CENTER	\$345,221,510	\$393,791,422	\$415,711,940	\$441,276,662	\$425,277,288	14.1%	5.6%	6.1%	-3.6%	5.4%
20	24	2	19	19		\$305,514,929	\$305,091,811	\$758,431,960	\$462,035,126	\$418,278,578	-0.1%	148.6%	-39.1%	-9.5%	8.2%
21	20	22	23	20	NORTHWESTERN UNIVERSITY AT CHICAGO	\$304,846,861	\$333,396,842	\$367,414,121	\$367,542,487	\$384,888,604	9.4%	10.2%	0.0%	4.7%	6.0%
16	19	26	24	21	BRIGHAM AND WOMEN'S HOSPITAL	\$388,928,321	\$338,400,990	\$327,644,200	\$357,068,821	\$380,319,421	-13.0%	-3.2%	9.0%	6.5%	-0.6%
26	22	25	2	22	NEW YORK UNIVERSITY SCHOOL OF MEDICINE	\$260,582,932	\$314,302,627	\$329,565,273	\$809,311,644	\$375,378,394	20.6%	4.9%	145.6%	-53.6%	9.6%
25	26	21	26	23	VANDERBILT UNIVERSITY MEDICAL CENTER	\$269,892,304	\$284,934,924	\$377,931,988	\$344,312,186	\$373,150,998	5.6%	32.6%	-8.9%	8.4%	8.4%
19	23	24	22	24	UNIVERSITY OF WISCONSIN MADISON	\$320,220,010	\$314,183,951	\$338,121,506	\$367,581,113	\$360,853,772	-1.9%	7.6%	8.7%	-1.8%	3.0%
27	29	29	25	25	BAYLOR COLLEGE OF MEDICINE	\$255,142,147	\$271,393,445	\$323,604,360	\$351,662,251	\$356,008,074	6.4%	19.2%	8.7%	1.2%	8.7%
24	27	28	29	26	UNIVERSITY OF SOUTHERN CALIFORNIA	\$273,498,811	\$282,888,397	\$324,592,664	\$316,031,543	\$321,380,322	3.4%	14.7%	-2.6%	1.7%	4.1%
1	1	1	1	1	Mass General Brigham	\$926,079,856	\$932,773,194	\$972,345,360	\$1,057,016,628	\$1,035,799,711	0.7%	4.2%	8.7%	-2.0%	2.8%



NIH Funding Rank Trends – Independent Hospitals

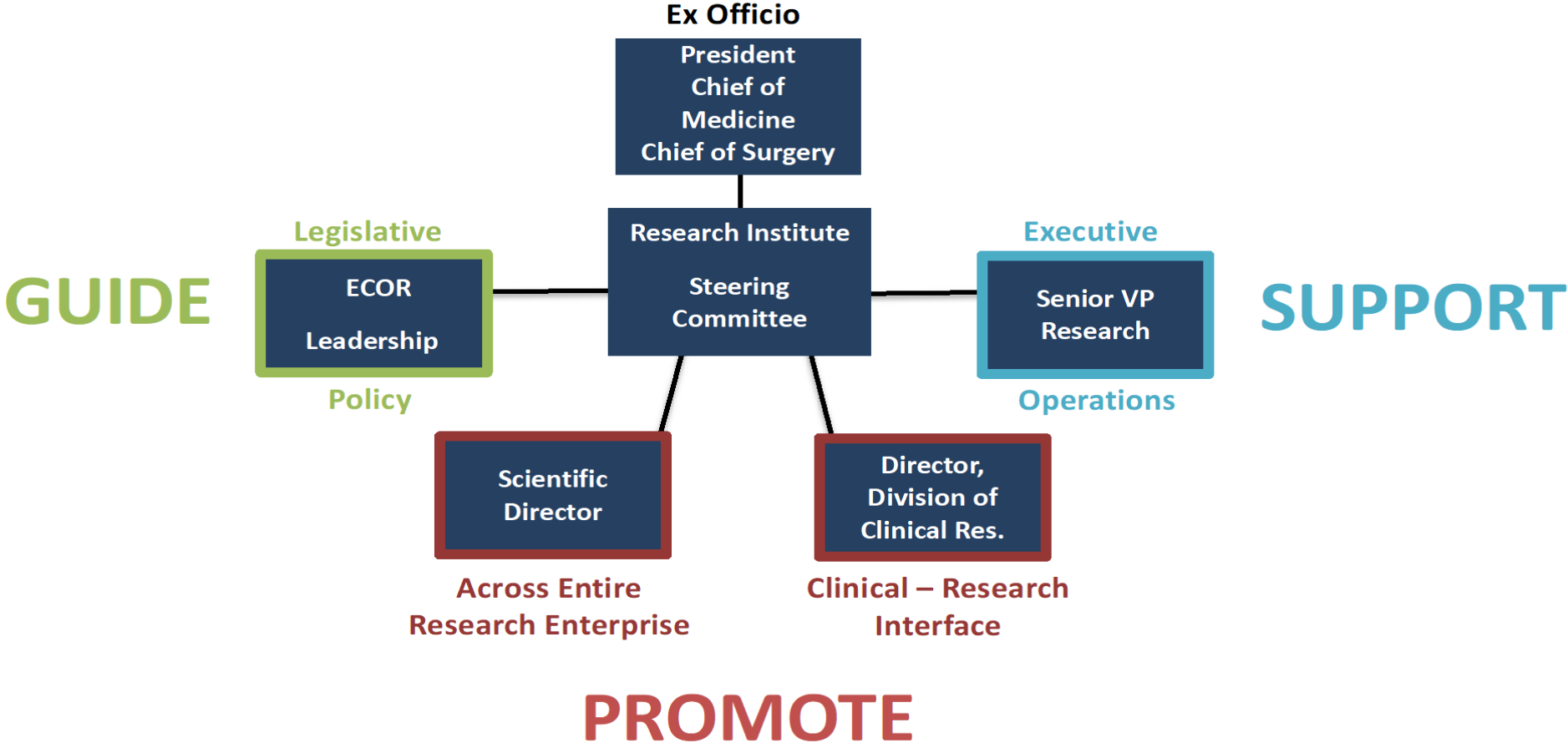
FY 2018 - FY 2022 NIH Ranking of Funding to All Independent Hospitals

Rank					INSTITUTION	Total Funding					Percent Change				CAGR
FY18	FY19	FY20	FY21	FY22		FY 2018	FY 2019	FY 2020	FY 2021	FY 2022	18-19	19-20	20-21	21-22	18-22
1	1	1	1	1	MASSACHUSETTS GENERAL HOSPITAL	\$465,776,958	\$499,645,254	\$551,214,295	\$600,667,106	\$559,532,073	7.3%	10.3%	9.0%	-6.8%	4.7%
2	2	3	2	2	BRIGHAM AND WOMEN'S HOSPITAL	\$388,928,321	\$338,400,990	\$327,644,200	\$357,068,821	\$380,319,421	-13.0%	-3.2%	9.0%	6.5%	-0.6%
3	3	2	3	3	VANDERBILT UNIVERSITY MEDICAL CENTER	\$269,892,304	\$284,934,924	\$377,931,988	\$344,312,186	\$373,150,998	5.6%	32.6%	-8.9%	8.4%	8.4%
5	4	4	4	4	CHILDREN'S HOSPITAL BOSTON	\$167,075,825	\$196,100,744	\$209,484,975	\$219,099,952	\$211,250,580	17.4%	6.8%	4.6%	-3.6%	6.0%
8	7	7	5	5	CINCINNATI CHILDREN'S HOSP MED CTR	\$120,876,156	\$149,617,325	\$168,440,418	\$166,010,321	\$168,688,168	23.8%	12.6%	-1.4%	1.6%	8.7%
4	6	6	6	6	DANA-FARBER CANCER INSTITUTE	\$172,449,395	\$159,798,479	\$174,094,914	\$159,777,039	\$157,744,606	-7.3%	8.9%	-8.2%	-1.3%	-2.2%
6	5	5	7	7	CHILDREN'S HOSPITAL OF PHILADELPHIA	\$145,610,804	\$163,022,306	\$178,185,562	\$134,575,922	\$154,733,483	12.0%	9.3%	-24.5%	15.0%	1.5%
7	8	8	8	8	BETH ISRAEL DEACONESS MEDICAL CENTER	\$128,148,819	\$129,999,391	\$135,941,803	\$127,771,968	\$126,775,422	1.4%	4.6%	-6.0%	-0.8%	-0.3%
11	11	11	11	9	CEDARS-SINAI MEDICAL CENTER	\$63,195,585	\$70,753,307	\$90,419,233	\$93,710,480	\$102,138,325	12.0%	27.8%	3.6%	9.0%	12.8%
9	9	9	9	10	ST. JUDE CHILDREN'S RESEARCH HOSPITAL	\$92,105,597	\$105,947,511	\$114,256,597	\$108,757,687	\$89,630,493	15.0%	7.8%	-4.8%	-17.6%	-0.7%
12	10	10	10	11	SEATTLE CHILDREN'S HOSPITAL	\$47,077,137	\$89,766,004	\$97,658,273	\$106,079,076	\$88,994,363	90.7%	8.8%	8.6%	-16.1%	17.3%
34	21	23	24	12	HACKENSACK UNIVERSITY MEDICAL CENTER	\$4438,714	\$18,584,815	\$20,704,924	\$18,265,972	\$84,348,218	318.7%	11.4%	-11.8%	361.8%	108.8%
10	12	12	12	13	NEW YORK STATE PSYCHIATRIC INSTITUTE	\$63,361,395	\$65,150,157	\$68,381,629	\$70,266,219	\$75,638,339	2.8%	4.9%	2.8%	7.6%	4.5%
20	20	19	18	14	MASSACHUSETTS EYE AND EAR INFIRMARY	\$24,738,160	\$26,066,533	\$32,639,530	\$33,439,533	\$38,909,599	5.4%	25.2%	2.5%	16.4%	12.0%
14	16	16	16	15	ROSWELL PARK CANCER INSTITUTE CORP	\$37,884,585	\$37,844,508	\$38,765,145	\$42,890,828	\$38,827,215	-0.1%	2.4%	10.6%	-9.5%	0.6%
16	17	17	17	16	RHODE ISLAND HOSPITAL	\$29,973,204	\$35,351,062	\$37,921,345	\$39,023,350	\$38,451,552	17.9%	7.3%	2.9%	-1.5%	6.4%
17	14	15	15	17	MCGLENN HOSPITAL (BELMONT, MA)	\$29,212,777	\$52,836,845	\$44,711,126	\$44,492,104	\$38,156,183	80.9%	-15.4%	-0.5%	-14.2%	6.9%
15	13	13	13	18	BOSTON MEDICAL CENTER	\$34,824,666	\$57,660,481	\$61,416,950	\$56,213,699	\$37,724,863	65.6%	6.5%	-8.5%	-32.9%	2.0%
21	19	22	19	19	CHILDREN'S HOSPITAL OF LOS ANGELES	\$22,295,828	\$26,729,651	\$24,701,672	\$32,131,518	\$35,123,138	19.9%	-7.6%	30.1%	9.3%	12.0%
26	24	24	21	20	LURIE CHILDREN'S HOSPITAL OF CHICAGO	\$10,974,430	\$17,023,249	\$19,926,766	\$25,253,736	\$30,020,714	55.1%	17.1%	26.7%	18.9%	28.6%
49	44	45	46	50	SPAULDING REHABILITATION HOSPITAL	\$1,345,076	\$2,207,094	\$2,427,499	\$2,058,149	\$1,507,806	64.1%	10.0%	-15.2%	-26.7%	2.9%

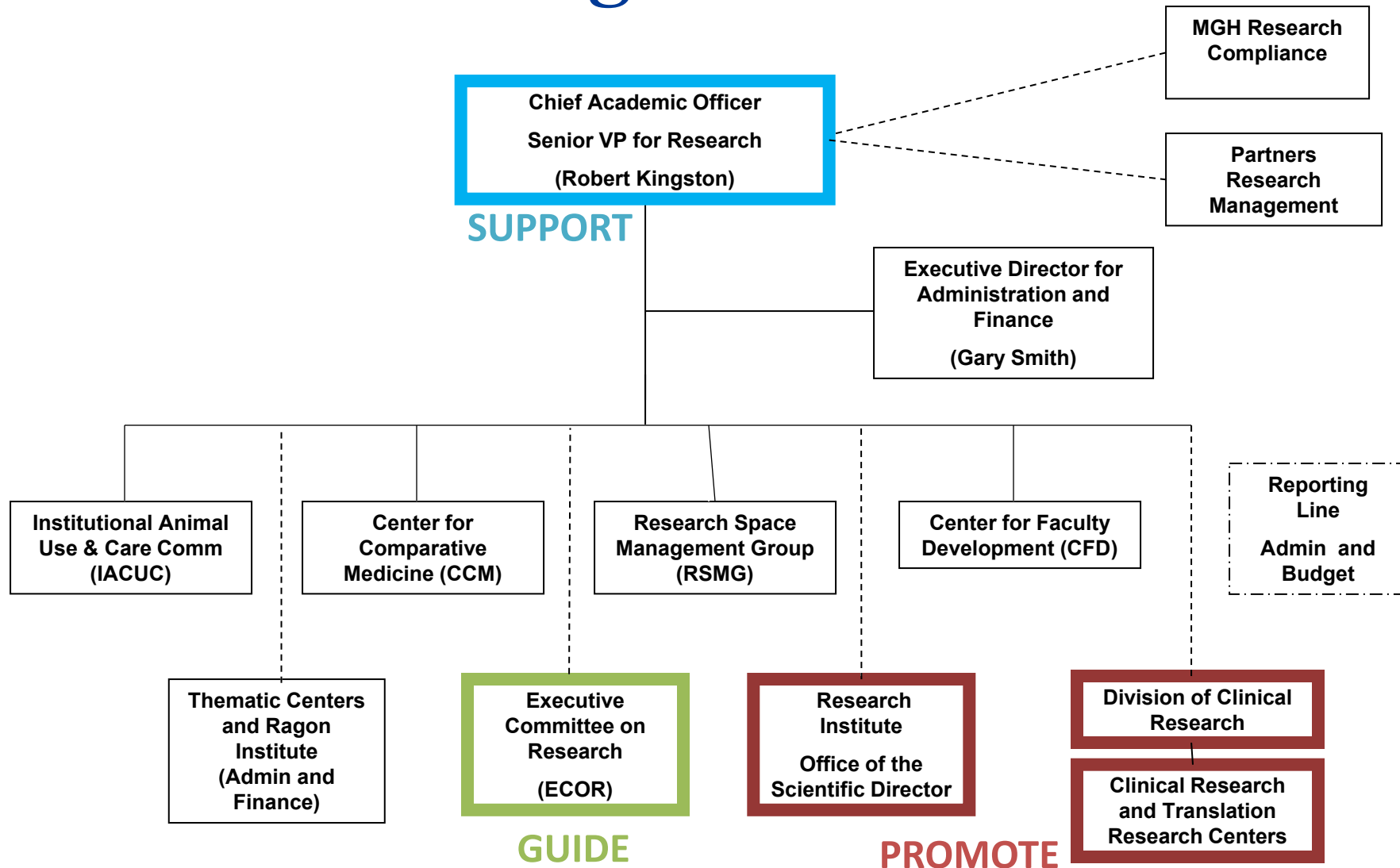


Leadership structure

MGH Research Institute Steering Committee (RISC)



MGH Research Management



Top "10" Things Every MGH Researcher Should Know!

YOU are a member and an important part of the Research Institute!

The Research Institute was started to support, guide, and promote research at Mass General, and it encompasses all researchers and support staff.

The MGH Research Intranet makes a great homepage! (<https://mghresearch.partners.org/>)

The Intranet quickly connects you to important research resources, including:

- One-click access to Google, MGB Research Navigator, Insight, PeopleSoft, Ellucid, the MGB Phone Directory, and MGH Cafeteria Menus
- A help and how-to page with over 60 topics
- A comprehensive research resource guide
- The on-call number to speak with a senior research administrator at any time: 617-726-HOW2 (4692)

The Executive Committee on Research (ECOR) website is a resource for internal grants and awards. (<http://ecor.mgh.harvard.edu>)

See internal funding opportunities (faculty awards, interim support grants, postdoctoral awards and external award nominations)



Research Institute Intranet: mghresearch.partners.org

[Home](#) | [Partners Internet](#) | [MGH Intranet](#) | [MGH Internet](#) | [Research Internet](#) | [Isuggest](#) | [Feedback](#)

Search Google Intranet



RESEARCH INTRANET

[ORGANIZATION](#) | [SUPPORT OFFICES](#) | [GRANTS & FUNDING](#) | [RESEARCH RESOURCES](#) | [FOR RESEARCH ADMIN](#) | [NEWS & EVENTS](#) | [FOR EMPLOYEES](#)

QUICK LINKS

[Help & How To](#)

[Resource Guide](#)

[IT Help Desk](#)

[Research Safety](#)

[COVID-19 Research](#)

[Navigator Quick Links](#)

[Research Top 10](#)

[US Labor Notices](#)

[Elucid - MGH Policies](#)

[Faculty Development](#)

[COVID FUNDING OPPORTUNITIES](#)



For immediate assistance, contact the Research Administrator on call at 617-726-HOW2 (4692)

TOOLS

[Find a Researcher](#)

[Partners Phone Directory](#)

[Outlook Email App](#)

[insight](#)

[Research NAVIGATOR](#)

[PeopleSoft](#)

[Res. Slides Collection](#)

[Isuggest](#)

[Shuttle Schedule](#)

[labarchives](#)

GUIDE

[Executive Committee on Research Awards & Grants](#)
[ECOR Grant Management Portal](#)
[Meetings & Events](#)
[Research News](#)
[Resources](#)

PROMOTE







[Division of Clinical Research](#)
[Submit your research outline](#)
[Monthly Snapshot of Science](#)
[Research Institute blog](#)
[Communicating science tips](#)
[Follow us on Twitter and Facebook](#)

SUPPORT

[Cmte. on Fundamental Research](#)
[Compliance & Integrity](#)
[Computing Resources](#)
[Research Space Management](#)
[Research Core Facilities](#)
[Training and Education](#)



Research Safety

<p>Safety Organization</p>  <ul style="list-style-type: none">• Research Safety Committee• Members and Safety Coordinators• Policy & Procedures • Chiefs & PIs• Safety Coordinators• Lab Personnel	<p>Safety Training</p>  <ul style="list-style-type: none">• Training and Lab Environments• Lab Orientation Checklist• Healthstream Login• Hub Login	<p>Safety Documentation</p>  <ul style="list-style-type: none">• Safety Manual• MGH Safety Committee Slides• Safety Bulletins
<p>Lab Safety Rounds</p>  <p>Starting in 2014 all lab spaces will be surveyed annually.</p> <ul style="list-style-type: none">• Inspection Policy• Lab Contact Spreadsheet• Pre-Inspection Checklist• Inspection Form• Lab Signage	<p>Emergency Services</p>  <p>How to download the Help & Safety App</p> <p>Emergency Response: 911 or 6-5400</p> <p>MGH Emergency Dept: 4-4100 MGH Emergency Operator: 6-2090 Poison Center: (9)1-800-682-9211</p> <p>Emergency Conditions and Severe Weather Hotline: 866-798-8402</p>	<p>Fire & Life Safety</p>  <ul style="list-style-type: none">• Fire and Smoke Barriers• Fire Extinguishers• Fire Safety and Response• Fire Safety Training



MGH Help & Safety App: <https://mgh-safety.partners.org/sa>

The screenshot displays the MGH Help & Safety App interface. At the top is a blue header with the MGH logo and the text "MASSACHUSETTS GENERAL HOSPITAL". Below the header is a grid of 13 service tiles, each with an icon and a label. The tiles are arranged in four rows: the first three rows have three tiles each, and the fourth row has one tile on the left. The tiles are: "911 and Emergency Numbers" (ambulance icon), "Important Contacts" (first aid kit icon), "Report a Problem" (bug icon), "RACE" (flame icon), "Safety Reporting" (globe icon), "SDS Source" (SDS icon), "Buildings & Grounds" (building icon), "Controlled Substances" (ID card icon), "IS Service Desk" (question mark icon), "MGH Research" (flask icon), "I suggest" (lightbulb icon), "Health Stream" (stream icon), and "Onboarding Checklist" (checkmark icon). External link icons are present on several tiles.

Icon	Label	External Link
	911 and Emergency Numbers	No
	Important Contacts	No
	Report a Problem	No
	RACE	No
	Safety Reporting	Yes
	SDS Source	Yes
	Buildings & Grounds	Yes
	Controlled Substances	Yes
	IS Service Desk	Yes
	MGH Research	Yes
	I suggest	Yes
	Health Stream	Yes
	Onboarding Checklist	No

