

Sign up for
ALS Link:



<https://bit.ly/3CqGbhb>

Thank you for joining the webinar!

We are admitting audience members from the waiting room

Please allow a few moments for the webinar to begin

3

2

1

Stay Connected to News in ALS Research

Patient Navigation – Central resource for people living with ALS

Phone: 833-425-8257 (HALT ALS)

E-mail: healeyalsplatform@mgh.harvard.edu

Upcoming Webinars (Thurs, 5:00- 5:30pm Eastern Time)

April 9th – HEALEY ALS Platform Trial Update

April 23rd – HEALEY ALS Platform Trial Update

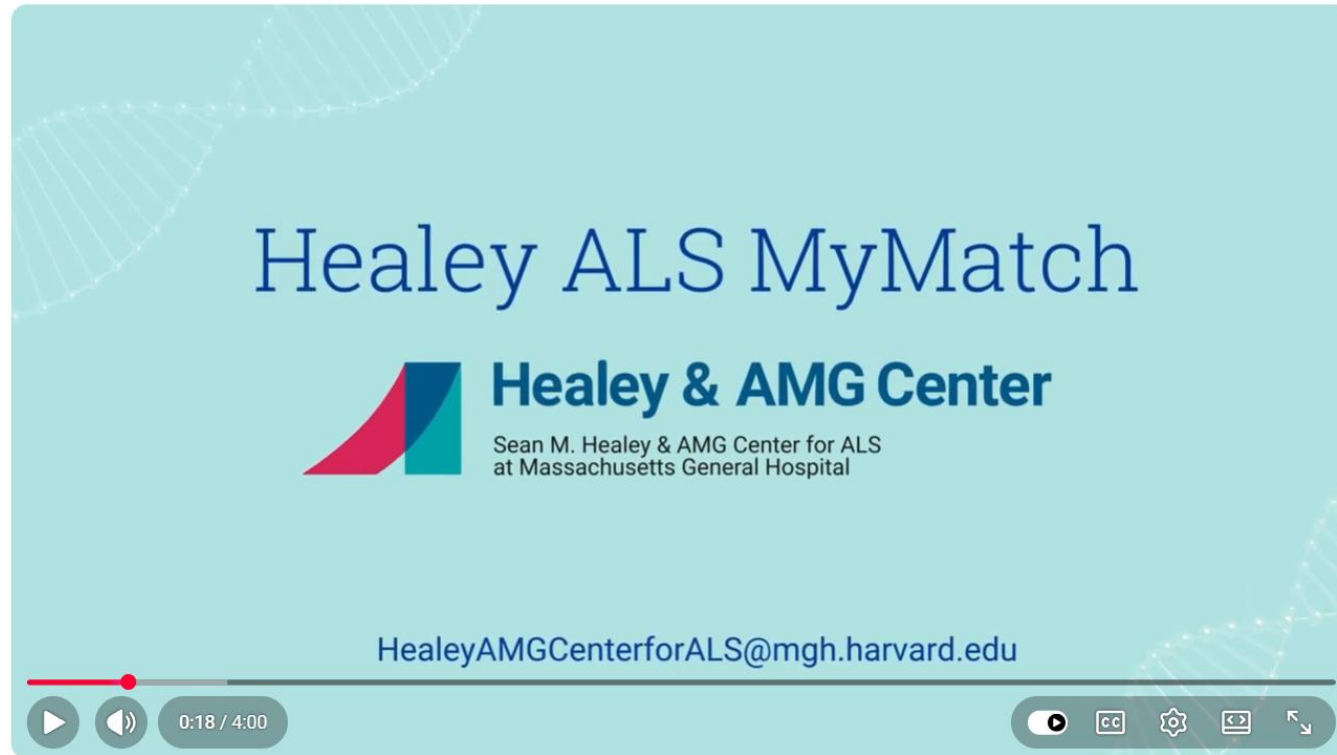
May 14th – Healey ALS MyMatch BANYAN Trial

Register for webinars



<https://bit.ly/3r6Nd2L>

New! ALS MyMatch Video



Healey ALS MyMatch



MassGeneralHospital
100K subscribers

Subscribe

👍 2



🔗 Share

💎 Ask

🔖 Save

⬇️ Download



https://youtu.be/3noTw7ZxGhk?si=yOtg_XYTYtBkDVq6

Watch short video overview of
Healey ALS MyMatch



<https://bit.ly/4tpxGZ5>



Healey ALS MyMatch Program

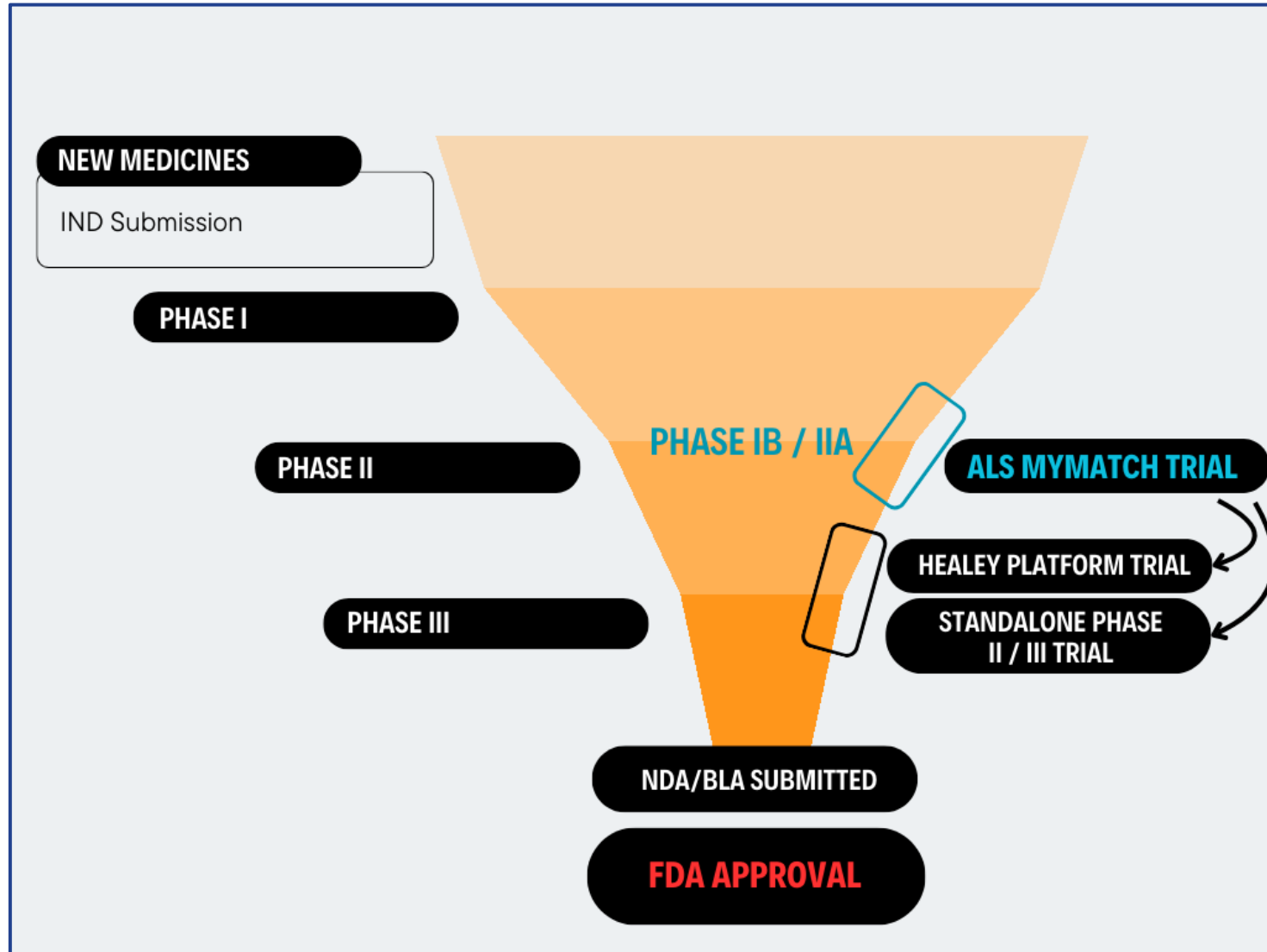
Healey & AMG Center Community Webinar
April 2, 2026

Suma Babu, MBBS, MPH
Principal Investigator, Healey ALS MyMatch

Sean M. Healey & AMG Center for ALS
Co-Director, MGH Neurological Clinical Research Institute (NCRI)
Associate Professor of Neurology, Harvard Medical School



ALS MyMatch Overview



Guiding Principles of MyMatch

- Speed and Efficiency
- Value-Informed Drug Development

Healey ALS MyMatch is an early phase clinical trial program

HEALEY ALS Platform Trial is a late phase clinical trial program

Why Now? Early Phase Pipeline Pressure

100+ Investigational Products are in or entering early phase clinical trials in ALS



Identifying the right individuals to match disease biology



Making trials more accessible and less burdensome

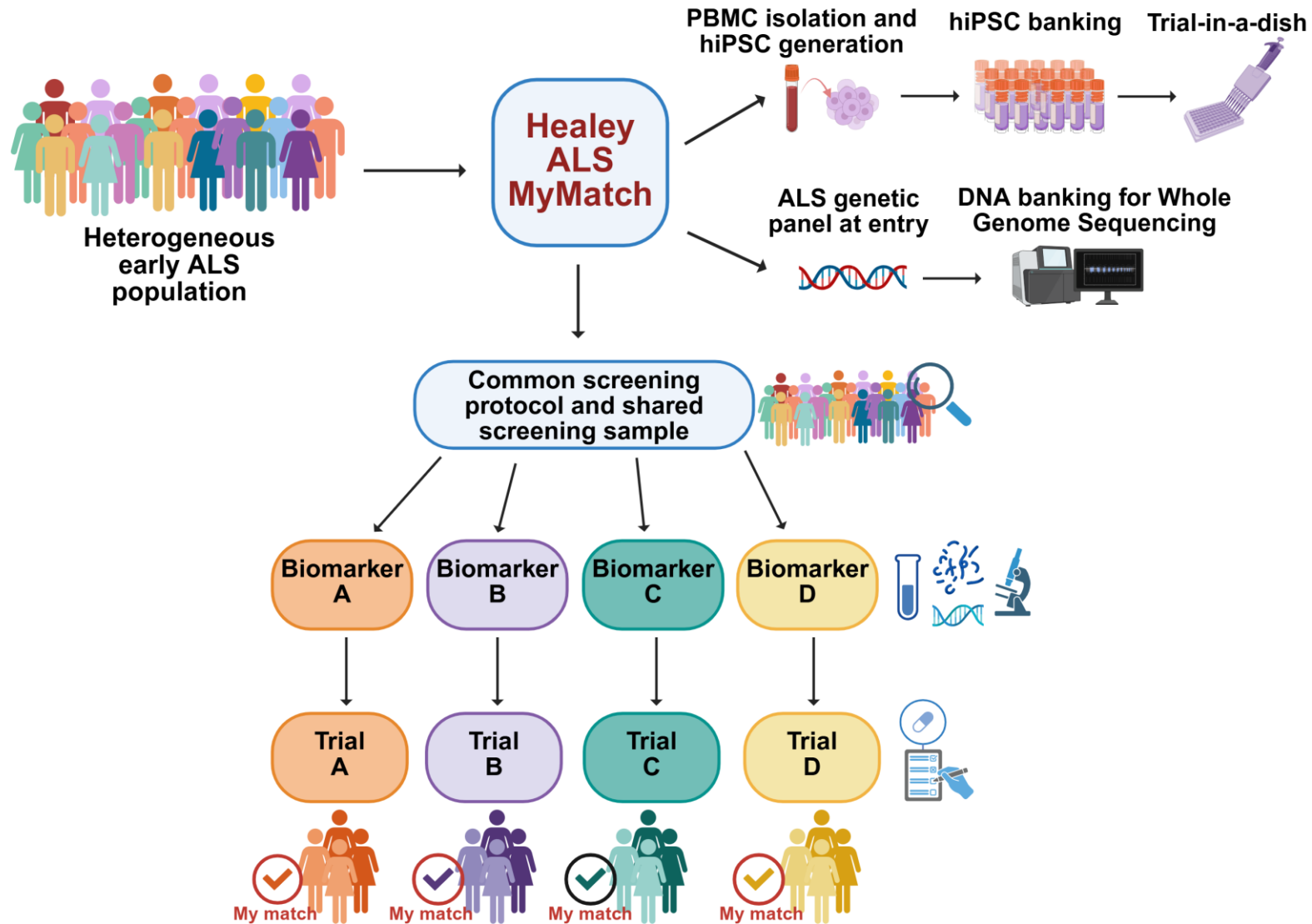


Understanding target engagement and dosage before late phase trial



Reducing trial costs and improving efficiency

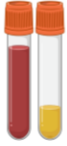
Shared screening data and biofluid samples for preliminary eligibility and trial matching | Genotyping | Stem cell lines for trial-in-a-dish



Time Savings

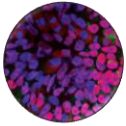
- ✓ **Short** trial design time ~ 2-3 months
- ✓ **Short referral-to-trial wait times:** simplified common screening protocol
- ✓ **Rapid** site startup, enrollment and closeout

Biomarkers being considered for current & upcoming Healey ALS MyMatch trials



Biofluid Biomarkers

- Blood and CSF NfL
- CSF Poly (GP)
- Flow cytometry for CD4+ T cell subset profiles,
- CSF and Serum multiplex assays for neuroinflammation, proteinopathy



Cell Based Biomarkers

- FoxP3+ , CD4+ T cell profiling
- PBMC single cell RNA sequencing
- Immunological markers on T cell culture assays
- iPSC derived induced motor neuron cell lines



Imaging Biomarkers

- TSPO-PET
- Multimodal quantitative MR imaging



Genetics and multiomics

- Whole Genome Sequencing
- Proteomics
- ALS gene panel for causative or risk modifier gene assessment



Digital Biomarkers

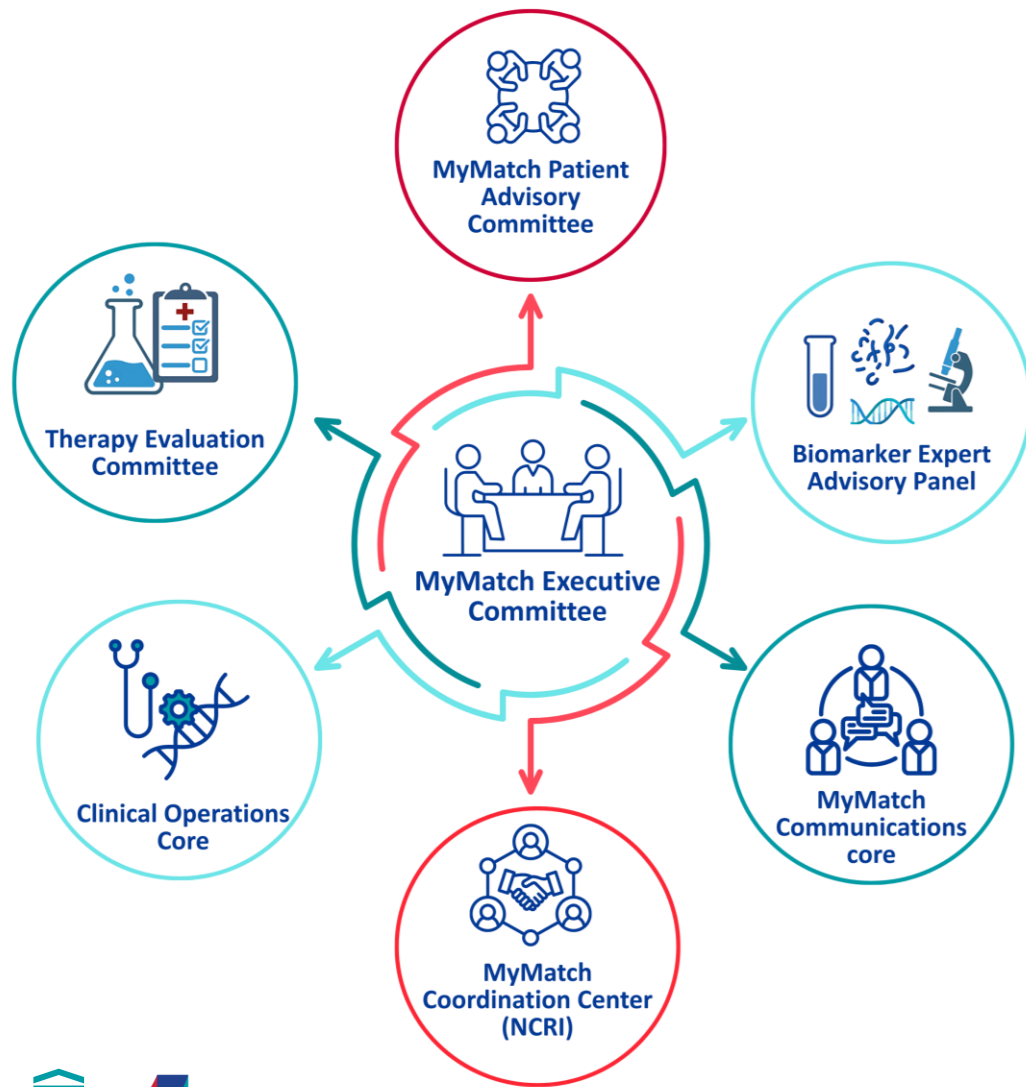
- Quantitative speech outcomes
- Actigraphy/Accelerometry outcomes



Electrophysiologic Studies

- Threshold tracking

ALS MyMatch Governance



MyMatch Therapy Evaluation Committee



Suma Babu, MBBS, MPH
Healey Center for ALS
Massachusetts General Hospital



Merit Cudkowicz, MD, MSc
Healey Center for ALS
Massachusetts General Hospital



Nicholas Maragakis, MD
ALS Center for Cell Therapy and
Regeneration Research
Johns Hopkins Medicine



Ghazaleh Sadri-Vakili, MS, PhD
Neuroepigenetics Lab
Massachusetts General Hospital



Sabrina Paganoni, MD, PhD
Healey Center for ALS
Massachusetts General Hospital



Jeremy Shefner, MD, PhD
Gregory W. Fulton ALS &
Neuromuscular Disease Center
Department of Neurology
Barrow Neurological Institute



Sami J Barmada, MD, PhD
East Ann Arbor Health &
Geriatrics Center
Department of Neurology
Michigan Medical School

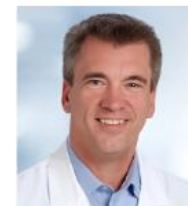


**Clotilde Lagier-Tourenne, MD,
PhD**
Healey Center for ALS
Massachusetts General Hospital

MyMatch Biomarker Scientific Advisory Expert Panel



James Berry, MD, MPH
Director, NCRI
Healey Center for ALS
Massachusetts General Hospital



Bob Bowser, PhD
Chief Scientific Officer
Barrow Neurological Institute



Len Petrucelli, PhD
Chair, Department of
Neurosciences
Mayo Clinic



Peter Young, PhD
Biotech /Pharma Consultant
BioHighland Consulting LLC



Henrik Zetterberg, PhD
Professor of Neurochemistry,
Neurodegenerative Diseases, UCL
Queen Square Institute of
Neurology



**Donatienne Van
Weehaeghe, MD, PhD**
Nuclearist, Department of
Radiology and Nuclear
Medicine (UZ Gent)



Leslie M. Thompson, PhD
Donald Bren Professor,
Neurobiology and Behavior
Charlie Dunlop School of
Biological Sciences





ALS MyMatch Gathers Momentum

Each trial in ALS MyMatch is named after a tree to symbolize our striving for hope and the deep scientific roots from which the trial stems

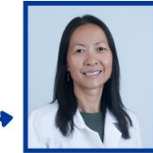
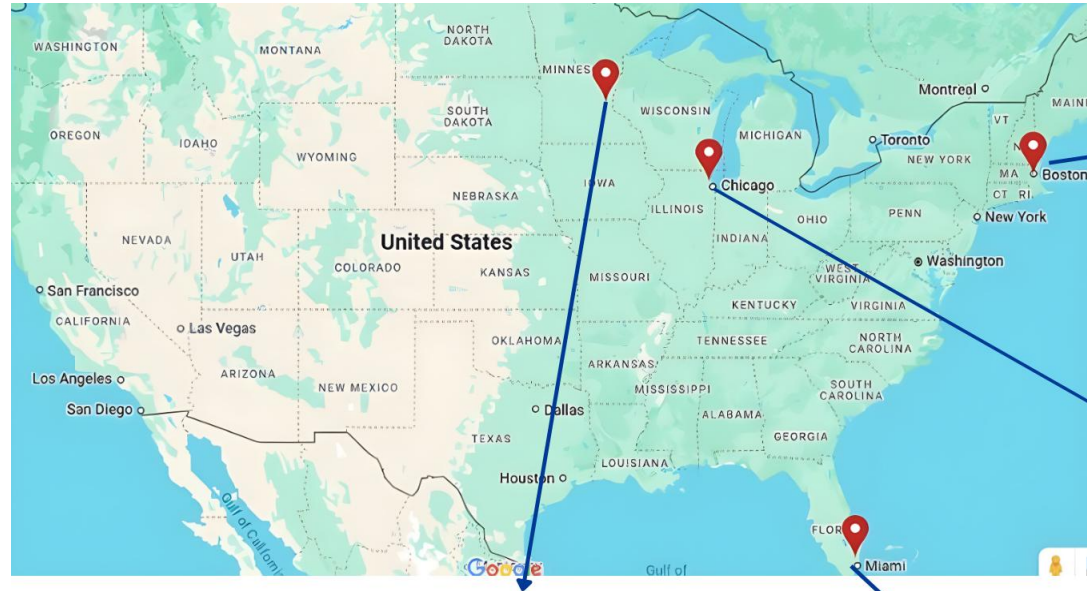


Building Momentum in ALS MyMatch

4 Currently Active ALS MyMatch Sites

- The Les Turner ALS Center at Northwestern Medicine
- Massachusetts General Hospital
- University of Minnesota
- Nova Southeastern University

Additional NEALS sites being added in 2026, further expansion in 2027



Doreen Ho, MD
Sean M. Healey & AMG
Center for ALS
Massachusetts General
Hospital



Zia Mars, CNP
Sean M. Healey & AMG
Center for ALS
Massachusetts General
Hospital



Senda Ajroud-Driss, MD
Les Turner ALS Foundation
Northwestern University Feinberg
School of Medicine



David Walk, MD, FAAN
Department of Neurology
University of Minnesota Twin Cities



Eduardo Locatelli, MD
Nova Southeastern University
(NSU) Neuroscience Institute



ALS MyMatch Website

<http://bit.ly/46W1C6c>

ALS MyMatch Trial Pipeline for 2026-2027

39 Companies have engaged about partnering for MyMatch

15 Applications received between March 2025 – March 2026

7 Experimental drugs selected to date

2 Future trials currently in design: Inflammasome, **Keros**



3 Additional company contracts in progress

- ❑ Spring 2026 – BANYAN Trial expected to begin enrolling
- ❑ Early Summer 2026 – ACACIA Trial anticipating topline results

Latest News & Updates

News

PRESS RELEASE • MAR 9, 2026

Sean M. Healey & AMG Center for ALS Announces Design with Keros Therapeutics for Upcoming Healey ALS MyMatch Trial

PRESS RELEASE

Sean M. Healey & AMG Center for ALS Selects Tiziana Life Sciences to Enter Healey ALS MyMatch Program | Massachusetts General Hospital

The Sean M. Healey & AMG Center for ALS at Mass General Brigham has selected Tiziana Life Sciences as one of the companies to enter the Healey ALS MyMatch Program. Learn more.

PRESS RELEASE

Healey & AMG Center for ALS Announces Design with Inflammasome Therapeutics for Upcoming Healey ALS MyMatch Trial | Massachusetts General Hospital

The Sean M. Healey & AMG Center for ALS at Massachusetts General Hospital has contracted with Inflammasome Therapeutics to design a new Healey ALS MyMatch trial. Learn more.

ALS MyMatch Website



<http://bit.ly/46W1C6c>

ACACIA: First ALS MyMatch Trial (NCT07047209)

Trial Overview

- Study drug: Oral Digoxin
- Entry disease markers: C9(+), Early ALS
- Open label, IND exempt
- 6-month treatment period
- 40 participants

Enrollment Timelines and Information

- Target enrollment reached within 4 months
- Study projections:
 - Last Participant Last Visit: May 2026
 - Topline Results: Summer 2026



Acacia tree



NEALS webinar on ACACIA

<https://bit.ly/4kTXbP0>

BANYAN Trial

Trial Overview

- Study drug: Nasal Foralumab
 - Treg pathway, Monoclonal Antibody
- 44 participants, randomized 3:1 active to placebo
- Matching criteria: NfL cutoff and TSPO genotyping



Read trial announcement

<https://bit.ly/4kUTskt>



Banyan tree



Resources & Community Engagement

Healey ALS MyMatch Website

- View press releases, trial information, community webinar schedule and recordings

ALS Link

- Email list to receive notifications about latest news, webinar topics, and research updates

Contact

- MyMatch Study Team
MGHALSMYMatch@mgb.org



Visit ALS MyMatch Website

<http://bit.ly/46W1C6c>



Sign up for the ALS Link

<http://bit.ly/3CqGbhb>

Acknowledgements

We sincerely thank all Healey ALS MyMatch participants and the dedicated sites of the NEALS Consortium for their invaluable contributions. This research was made possible through the generous support of the Sean M. Healey & AMG Center for ALS, ALS ONE, the Will Hardy Foundation, Chuck and Terry Abdalian Fund for ALS Research, Richard J. Wolnik Foundation for ALS Research, Never Surrender, Inc., the Frank X. Carroll Golf Tournament, The Martha Olson-Fernandez Foundation, and Team Goose, as well as numerous individual donor families. We are deeply grateful to our donor community for their unwavering commitment to advancing this critical work.

