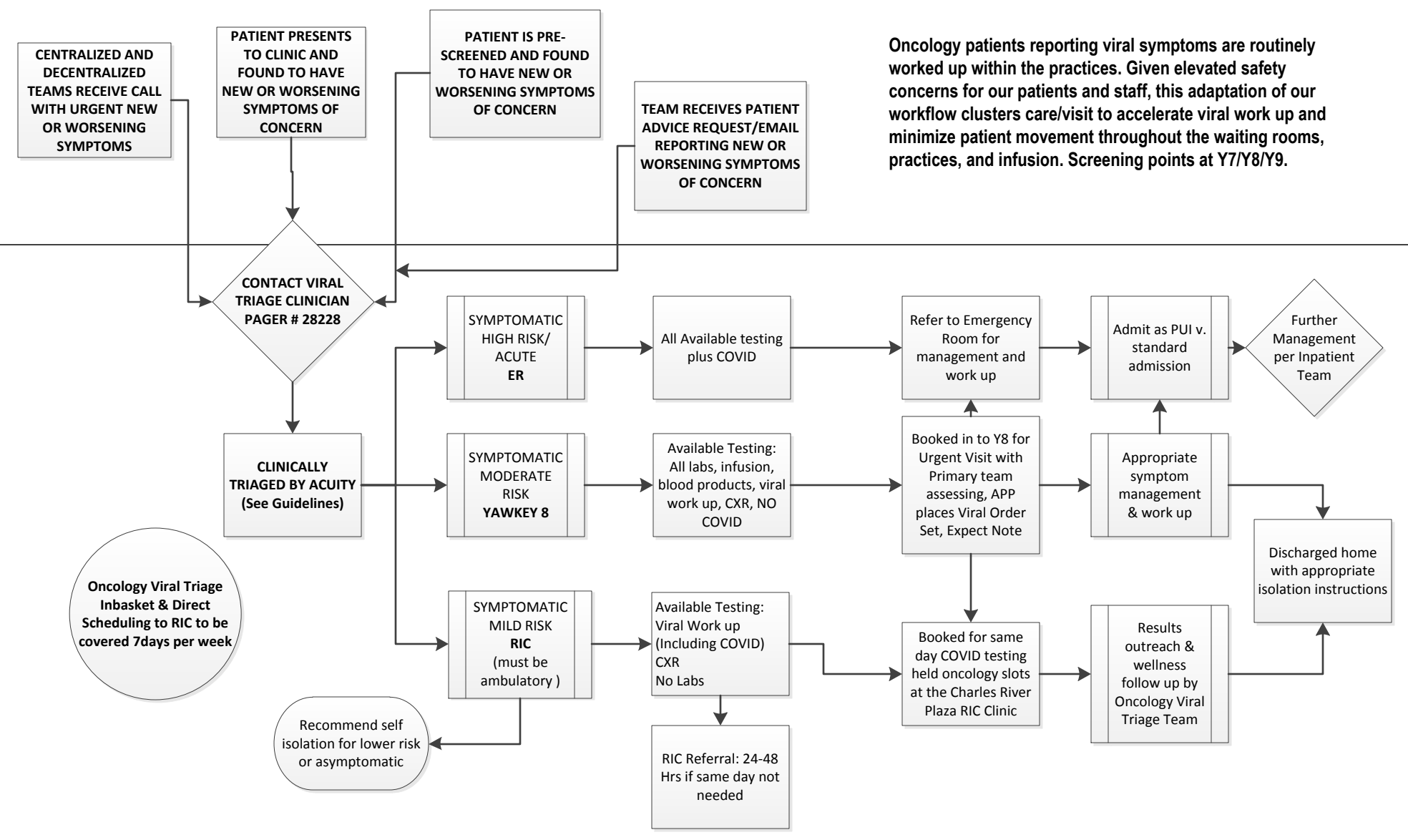


MGH Cancer Center Ambulatory Viral Triage Pathway

Reviewed by MGCC Ambulatory Clinical & Administrative Leadership 3/23/2020
<https://apollo.massgeneral.org/coronavirus/>

POINT OF PATIENT ENTRY

ONCOLOGY VIRAL TRIAGE CLINICIAN
 PAGER # 28228



Oncology patients reporting viral symptoms are routinely worked up within the practices. Given elevated safety concerns for our patients and staff, this adaptation of our workflow clusters care/visit to accelerate viral work up and minimize patient movement throughout the waiting rooms, practices, and infusion. Screening points at Y7/Y8/Y9.