

THE MAXWELL & ELEANOR BLUM PATIENT AND FAMILY LEARNING CENTER

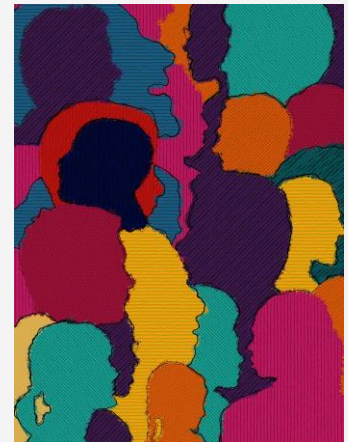
# Staying Healthy in a Pandemic: What Can We Safely Do?

**Please note: this program will be held at 1:00 PM.**

The past two years have been a major rollercoaster for all of us. So much has changed and despite much progress, so many uncertainties remain. However, life goes on and we have to figure out a way to take care of ourselves. As part of **MGH's recognition of National Minority Health Month**, we hope to be able to convey that there are still many safe ways to stay healthy and encourage communities who have been particularly affected by the pandemic to continue working with their healthcare providers to address preventive and chronic care needs. Please join us with your questions and concerns, and hear about how we can safely move forward.

**Open to MGH staff, patients, and the general public. To attend this free program, click here: <https://partners.zoom.us/j/86459744600>**

**Please submit questions you may have about the topic before the program to: [PFLC@partners.org](mailto:PFLC@partners.org) so that the speaker may address them during the session.**



**Date: Wednesday, April 27, 2022**

**Time: 1:00 PM - 2:00 PM**



**Featured Speaker: Claude I. Alabre, MD**

Dr. Alabre is a primary care doctor at MGH with a strong interest in medical and patient education. He is currently the medical director for a health education vlog called "Your Healthy Java," and one of the medical liaisons with the MGH Office of Equity and Community Health. He has been very active in COVID and vaccine education since the pandemic, and is involved in many efforts to help reduce health disparities in our most vulnerable populations.



**Featured Speaker: Efrén J. Flores, MD**

Dr. Flores is a radiologist in the Thoracic Division at MGH, Associate Chair for MGB Radiology Equity, Inclusion and Community Health, and community clinical liaison for the MGH Office of Equity and Community Health.

**For more information,**

**call 617-724-7352 or**

**email [PFLC@partners.org](mailto:PFLC@partners.org)**

This program is a collaboration between the Maxwell & Eleanor Blum Patient and Family Learning Center and MGH Equity and Community Health.

