



MASSACHUSETTS
GENERAL HOSPITAL



BRIGHAM AND
WOMEN'S HOSPITAL

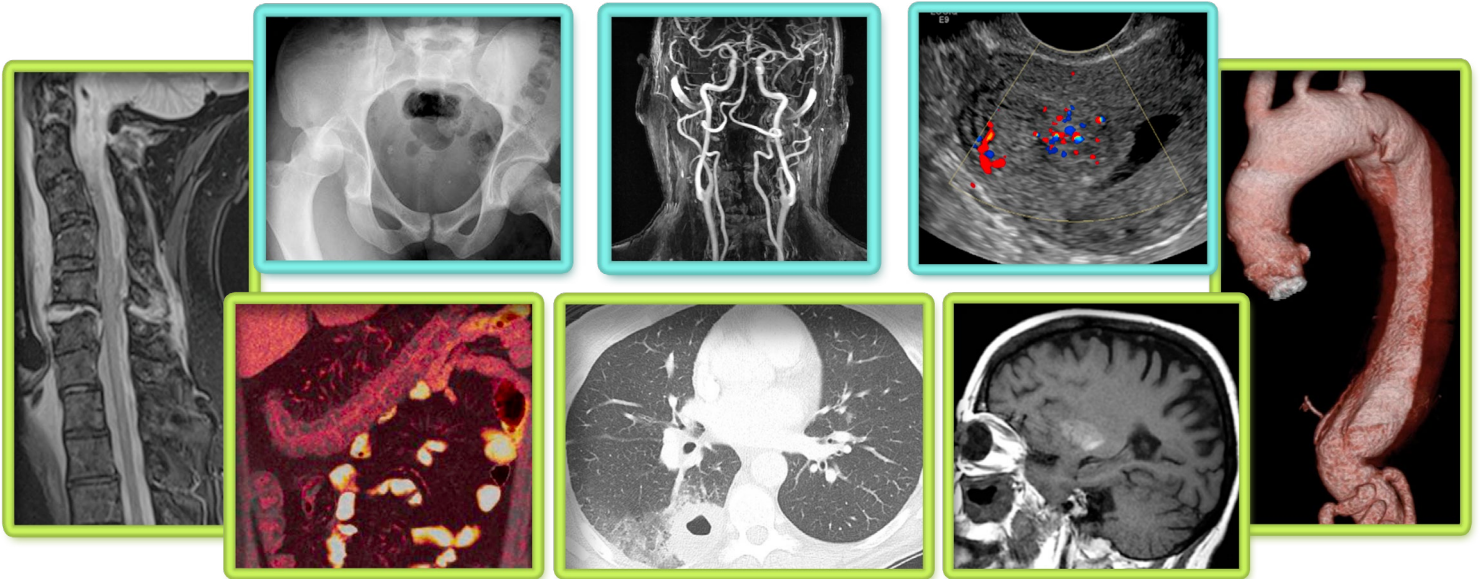
Offered by:
Massachusetts General Hospital and
Brigham and Women's Hospital
Departments of Radiology



HARVARD
MEDICAL SCHOOL

Essentials of Emergency Radiology 2018: Pearls & Pitfalls

June 9-10, 2018



**Richard B. Simches Research Center, Massachusetts General Hospital
3rd Floor, 185 Cambridge Street, Boston, MA 02114**

**Course Directors:
Bharti Khurana, MD
Michael H. Lev, MD, FAHA, FACR**

Course Description:

The educational objective of this intensive, two-day course is to provide a comprehensive, focused review of the major basic & advanced principles of diagnostic emergency radiology in the evaluation of acutely ill and injured patients. Specifically, we will emphasize the management, acquisition, and interpretation of structural and advanced imaging studies of the brain, spine, extremities, heart, lungs, abdomen, pelvis, and vascular system, with the goals of:

1. Appropriate application of clinical imaging algorithms
2. Implementation of relevant recent technical advances
3. Formulation of a systematic approach to interpreting traumatic and non-traumatic conditions from head-to-toe

Special emphasis will be placed on the recognition of common imaging mimics & misses, highlighting relevant pearls & pitfalls, as well as expert tips & “tricks-of –the-trade”. Didactic lectures will additionally feature “what the referring clinician needs to know,” up-to-date emergency department workflow & clinical decision support tools, and relevant current healthcare policy issues.

For more information and to register please go to:

<https://cmeregistration.hms.harvard.edu/emergencyradiology2018>

Learning Objectives:

Upon completion of this activity, participants will be able to:

- Select the most appropriate imaging approach to allow prompt evaluation of injured and acutely ill adult & pediatric patients.
- Utilize a systematic check list approach in interpreting imaging of traumatic and non-traumatic conditions from head to toe, including recognition of incidental findings requiring non-urgent, outpatient follow-up.
- Develop rapid and accurate recognition of pathology by understanding common errors.
- Recognize when additional imaging is needed in ED, including consideration in the differential diagnosis of less common pathologies that may nonetheless require more urgent treatment.
- Describe the pitfalls and mimics of common conditions presenting to the Emergency Department.
- Apply emerging technologies, such as dual energy CT, advanced MRI, and radiation dose reduction techniques, in emergency imaging to the care of patients.

Target Audience:

This course would be beneficial to any general radiologist, emergency radiologist, trauma surgeon, ED or critical care physician or physician assistant – at any level of training – who requires a brief but thorough advanced clinical update in state-of-the-art emergency imaging by leaders in the field.



Accreditation:

The Harvard Medical School is accredited by the Accreditation Council for Continuing Medical Education (ACCME) to provide continuing medical education for physicians.

The Harvard Medical School designates this live activity for a maximum of *16 AMA PRA Category 1 Credits™*. Physicians should claim only credit commensurate with the extent of their participation in the activity.

Registration Information:

Physicians: \$575.00

Residents/Fellows in Training: \$450.00

Allied Health Professionals: \$450.00

**Processing \$5 (non-refundable service fee)*

All fees shown in USD. Each participant will receive a link for an electronic syllabus only.

Registration by credit card (VISA, MasterCard or American Express) or check can be made through Harvard Medical School's secure online registration system at

<https://cmeregistration.hms.harvard.edu/emergencyradiology2018>

Registration by check (draft on a United States bank), please make payable to Harvard Medical School. Learners who choose to pay by check will be prompted to download an online form to send in with a payment. Telephone or fax registration is not accepted. Registration with cash payment is not permitted. Upon receipt of your paid registration, you will receive an email confirmation. Be sure to include an email address that you check frequently. Your email address is used for critical information including registration confirmation, evaluation and certificate.

Disclaimer:

CME activities accredited by Harvard Medical School are offered solely for educational purposes and do not constitute any form of certification of competency. Practitioners should always consult additional sources of information and exercise their best professional judgment before making clinical decisions of any kind.

Inquires:

By phone: (617-384-8600), Monday-Friday, 9:00am-5:00pm (ET) or by e-mail at: ceprograms@hms.harvard.edu

Disclosure Policy:

Harvard Medical School (HMS) adheres to all ACCME Accreditation Criteria and Policies. It is HMS's policy that those who have influenced the content of a CME activity (e.g. planners, faculty, authors, reviewers and others) disclose all relevant financial relationships with commercial entities so that HMS may identify and resolve any conflicts of interest prior to the activity. These disclosures will be provided in the activity materials along with disclosure of any commercial support received for the activity. Additionally, faculty members have been instructed to disclose any limitations of data and unlabeled or investigational uses of products during their presentations.

Refund Policy:

Refunds, less an administrative fee of \$75, will be issued for all cancellations received two weeks prior to the start of the course. Refund requests must be received by postal mail, email, or fax. No refund will be issued should cancellation occur less than two weeks prior. "No shows" are subject to the full course fee and no refunds will be issued once the conference has started.

Course Location:

All sessions will be held at the Richard B. Simches Research Center, MGH, 3rd floor, 185 Cambridge Street, Boston, MA 02114. The Mass General parking garages are designated for patients and their visitors. We recommend that course participants park in a nearby private parking lot or take public transportation <http://boston.bestparking.com/>

Only Mass General patients and their visitors are eligible for reduced parking rates. The day rate for all others using the MGH garages is \$48.

Online Registration:

To register or view activity information online visit:

<https://cmeregistration.hms.harvard.edu/emergencyradiology2018>



DAY 1	SAT JUNE 9	
7:00-7:55	Continental Breakfast/ Registration	
7:55-8:00	Welcome and Introduction	Khurana / Lev
ABDOMEN: TRAUMATIC AND NON-TRAUMATIC EMERGENCIES		
8:00-8:30	Abdominal Trauma: Bowel, Mesentery	Soto
8:30-9:00	Traumatic Vascular Injuries	Soto
9:00-9:30	Abdominal Trauma: Liver, Spleen, Pancreas, Kidneys	Singh
9:30-10:00	Post-Operative Abdominal Emergencies	Soto
10:00-10:15	QUESTIONS, BREAK	Faculty
10:15-10:40	CT, CTA, DECT: Protocols, Pearls, & Pitfalls	Sodickson
10:40-11:05	Acute Abdomen: RLQ, LLQ Pain	Singh
11:05-11:30	Acute Abdomen: RUQ, LUQ pain	Uyeda
11:30-11:55	Abdomen Summing Up: Tricky Cases	Dileo
11:55-1:10	LUNCH BREAK	On own
FACE / NECK / THORACIC TRAUMA		
1:10-1:35	Facial Trauma	Avery
1:35-2:00	Head Trauma: Pearls & Pitfalls in the Elderly	Nunez
2:00-2:25	Cervical Spine Trauma	Avery
2:25-2:50	Iatrogenic Chest Emergencies	Avery
2:50-3:15	Chest Trauma	Novelline
3:15-3:30	QUESTIONS, BREAK	Faculty
MSK EMERGENCIES		
3:30-3:55	Easily Missed Extremity Fractures	Lawrason
3:55-4:20	"Don't Miss!" Osteomyelitis and Septic Arthritis in ED	Mandell
4:20-4:50	Non Traumatic MSK Emergencies: Case Based	Smith
4:50-5:35	General ED Case Based Review - Pearls, Pitfalls, & More	Khurana
5:35-5:45	Questions and Comments	Khurana / Lev
5:45	Adjourn	

New this year!

***Please Note: Program changes/substitutions may be made without notice.**

DAY 2	SUN JUNE 10	
7:15-7:55	Continental Breakfast	
7:55-8:00	Welcome	Khurana / Lev
NEURO EMERGENCIES		
8:00-8:45	"Don't Miss" Non-Stroke Neurological Emergencies	Lev
8:45-9:15	How To Read a Head CT and H&N CTA	Potter
9:15-10:00	"Don't Miss" Neuro Emergencies: Must Rule These Out!	Lev
10:00-10:15	QUESTIONS, BREAK	Faculty
10:15-10:40	Non-traumatic Head & Neck Emergencies: Case Based	Kamalian
10:40-11:05	Orbital Emergencies	Juliano
11:05-11:30	Future Directions in Traumatic Brain Injury	Gupta
11:30-11:55	Integrating Cardiac Imaging into ED Practice	Ghoshharja
11:55-1:00	LUNCH BREAK	On own
TOPICS IN NON-TRAUMATIC ED IMAGING		
1:00-1:25	Pulmonary Embolism, Venous Emergencies: Case Based	Ledbetter
1:25-1:50	The Role of MRI in the ED? Case Based Applications	Flores
1:50-2:15	Aortic Emergencies: Case-Based	Ledbetter
2:15-2:45	Pediatric Emergencies: "The Child is Not Just a Small Adult"	Walters
2:45-3:05	"Don't Miss" Pediatric Fractures	Walters
3:05-3:20	QUESTIONS, BREAK	Faculty
3:20-3:45	Pelvic pain and bleeding	Wortman
3:45-4:10	OB Emergencies	Alkasab
4:10-4:40	Case-Based US Quiz: Diagnosis? Recommendations?	Rocha
ED WORKFLOW AND ITTOOLS		
4:40-5:00	CDS, Communications, & AI: the Future of ED Imaging	Alkasab
5:00-5:20	ED Radiology Final Exam: "Top Ten" Jeopardy	Khurana / Lev
5:20-5:30	Questions, Discussion	Khurana / Lev
5:30	Adjourn	

New this year!

Harvard Medical School Faculty

Tarik K. Alkasab, MD, PhD
Assistant Professor of Radiology, HMS
Radiologist, Massachusetts General Hospital

Laura L. Avery, MD
Assistant Professor of Radiology, HMS
Assistant Radiologist, Division of Emergency Radiology,
Massachusetts General Hospital

Jeffrey N. Dileo, DO
Instructor in Radiology, HMS

Efren J. Flores, MD
Instructor of Radiology, HMS
Director of Radiology Community Health Improvement,
Massachusetts General Hospital

Brian B. Ghoshhajra, MD, MBA
Assistant Professor of Radiology, HMS
Service Chief, Cardiovascular Imaging, Program Director,
Cardiac Imaging Fellowship, Massachusetts General Hospital

Rajiv Gupta, MD, PHD
Associate Professor, HMS
Associate Radiologist, Massachusetts General Hospital
Director, Advanced X-ray Imaging Sciences (AXIS) Center
MGH Site Miner, CIMIT and B-BIC

Amy F. Juliano, MD
Assistant Professor of Radiology, HMS
Staff Radiologist, Massachusetts Eye and Ear Infirmary

M. Shahmir Kamalian, MD
Instructor in Radiology, HMS
Division of Emergency Radiology, Massachusetts General Hospital

Bharti Khurana, MD
Assistant Professor of Radiology, HMS
Program Director of Emergency Radiology Fellowship,
Brigham and Women's Hospital

J. Nash Lawrason, MD
Assistant Professor of Radiology, HMS
Assistant Radiologist, Division of Emergency Radiology,
Massachusetts General Hospital

M. Stephen Ledbetter, MD, MPH
Assistant Professor of Radiology, HMS
Chief of Radiology, Brigham and Women's Faulkner Hospital

Michael H. Lev, MD, FAHA, FACR
Professor of Radiology, HMS
Director of Emergency Radiology, Director of Emergency
Neuroradiology, Massachusetts General Hospital

Jacob C. Mandell, MD
Instructor in Radiology, HMS
Division of Musculoskeletal Imaging and Intervention,
Brigham and Women's Hospital



Robert A. Novelline, MD, FACR
Professor Emeritus of Radiology, HMS
Honorary Radiologist, Massachusetts General Hospital

Diego Nunez, MD, MPH, FACR
Senior Lecturer on Radiology, HMS
Director Emergency Neuroradiology,
Brigham and Women's Hospital

Christopher A. Potter, MD
Instructor in Radiology, HMS
Division of Emergency Radiology, Brigham and Women's Hospital

Tatiana Rocha, MD
Instructor in Radiology, HMS
Division of Emergency Radiology, Brigham and Women's Hospital

Ajay Singh, MD
Assistant Professor of Radiology, HMS
Radiologist, Division of Emergency Radiology,
Massachusetts General Hospital

Stacy E. Smith, MD
Assistant Professor of Radiology, HMS
Chief and Distinguished Barbara Weissman Chair,
Division of Musculoskeletal Imaging and Intervention, Associate
Residency Program Director, Brigham and Women's Hospital

Aaron Sodickson, MD, PhD
Associate Professor of Radiology, HMS
Division Chief, Emergency Radiology and
Medical Director of CT, Brigham and Women's Hospital

Jorge A. Soto, MD
Professor of Radiology, BUSM
Chairman, Department of Radiology, Boston Medical Center

Jennifer W. Uyeda, MD
Instructor in Radiology, HMS
Division of Emergency Radiology, Brigham and Women's Hospital

Michele M. Walters, MD
Instructor in Radiology, HMS
Staff Pediatric Radiologist, Physician Director of Satellite
Imaging, Boston Children's Hospital

Jeremy R. Wortman, MD
Instructor in Radiology, HMS
Staff Radiologist, Brigham and Women's Hospital