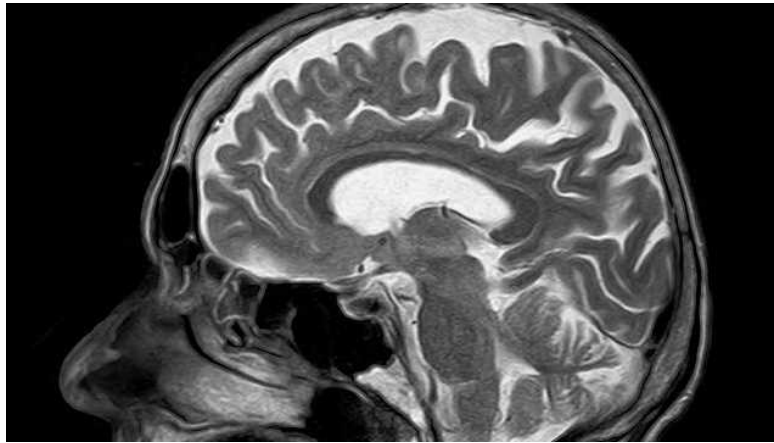


Assessment of Portable Magnetic Resonance Imaging

The Neurological Clinical Research Institute is currently recruiting participants with **multiple sclerosis**.



Participants will receive a MRI scan lasting about 25 minutes at Massachusetts General Hospital. Participants are paid \$80.

If interested, please contact:
Amrapali Patel, Clinical Research Coordinator
Telephone: 617-643-2947 Email: apatel120@mgh.harvard.edu

There are no anticipated serious psychological or physical risks to participation. Participation is likely to help test and improve the performance of a new, portable, very-low magnetic field MRI scanner.

