

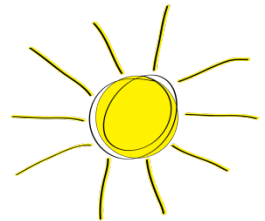
Light Therapy as a Treatment for Fatigue in Multiple Sclerosis

Participants 18 to 70 years old needed

The Neurological Clinical Research Institute is currently recruiting participants **18-70 years old with multiple sclerosis-related fatigue.**



We provide a study stipend of \$125 for your participation.



This research study involves a 1-hr screening visit at the MGH Neurology Out Patient Clinic, followed by 2 weeks of sleep tracking, 4 weeks of at home light box usage and an additional 4 weeks of sleep tracking. One additional visit will be required after the treatment and follow up period

If interested please contact:

Andre Vogel, Clinical Research Coordinator

Telephone#: 617-726-4540 Email: avogel@partners.org

There are no anticipated serious psychological or physical risks to participation. There may not be any direct benefits, but participation is likely to help find the answer to the research question.



Principal Investigators:

Farrah J. Mateen, M.D., Ph.D.
Neurologist, Dept. of Neurology, MGH
Assistant Professor, Harvard Medical School

Aleksander Videnovic, M.D., MSc
Neurologist, Dept of Neurology, MGH
Assistant Professor, Harvard Medical School

