




Pictorial Pediatric Symptom Checklist (PPSC)

1

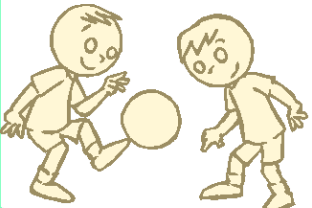
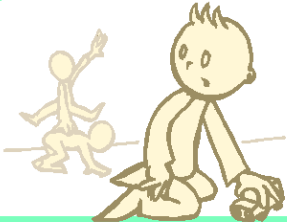
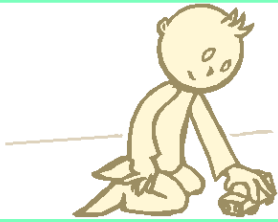
Emotional and physical health go together in children. Because parents are often the first to notice a problem with their child's behavior, emotions, or learning, you may help your child get the best care possible by answering these questions.

Please mark with a ✓ the statement that best describes your child:



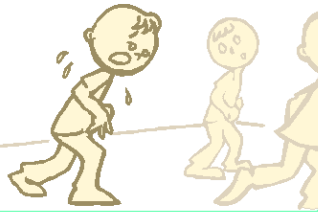
1 Complains of aches and pains

	NEVER		SOMETIMES		OFTEN
---	-------	---	-----------	---	-------

2 Spends more time alone

	NEVER		SOMETIMES		OFTEN
--	-------	--	-----------	--	-------

3 Tires easily, has little energy

	NEVER		SOMETIMES		OFTEN
---	-------	---	-----------	---	-------

4 Fidgety, unable to sit still

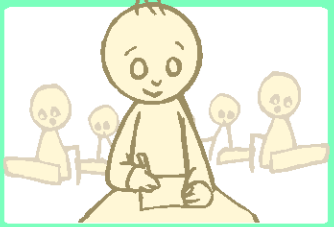
	NEVER		SOMETIMES		OFTEN
---	-------	---	-----------	---	-------

5 Has trouble with teacher

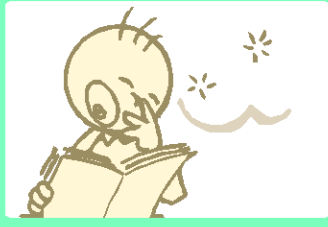
	NEVER		SOMETIMES		OFTEN
---	-------	---	-----------	---	-------



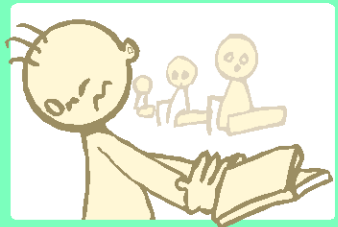
6 Less interested in school



NEVER



SOMETIMES



OFTEN

7 Acts as if driven by a motor



NEVER



SOMETIMES

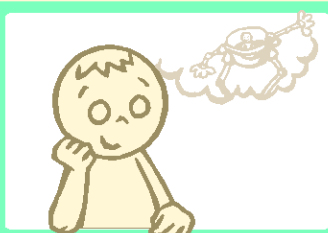


OFTEN

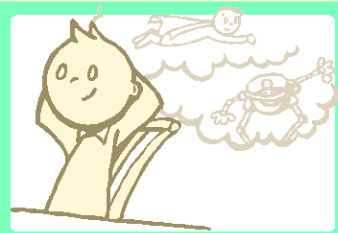
8 Daydreams too much



NEVER



SOMETIMES

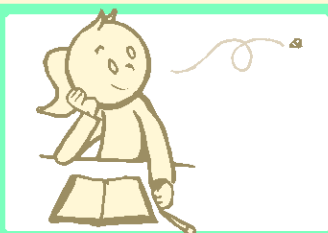


OFTEN

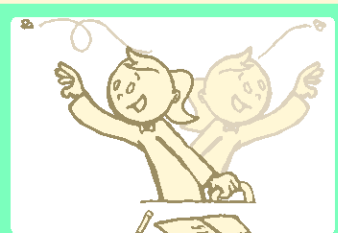
9 Distracted easily



NEVER

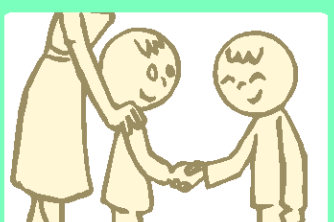


SOMETIMES

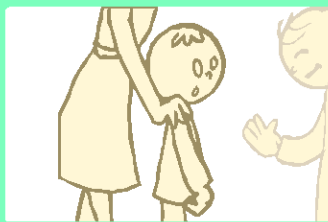


OFTEN

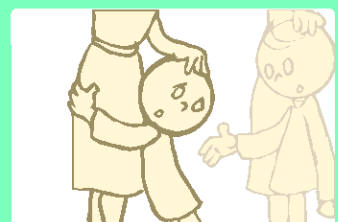
10 Is afraid of new situations



NEVER



SOMETIMES



OFTEN

11 Feels sad, unhappy



NEVER



SOMETIMES



OFTEN



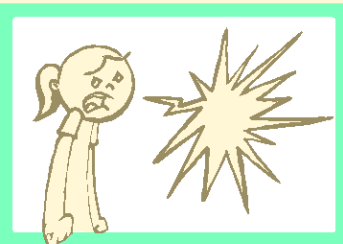
12 Is irritable, angry



NEVER



SOMETIMES



OFTEN

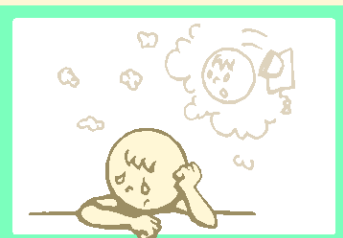
13 Feels hopeless



NEVER



SOMETIMES



OFTEN

14 Has trouble concentrating



NEVER

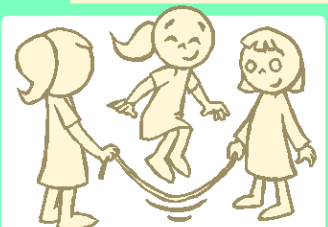


SOMETIMES

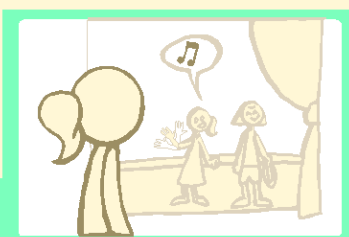


OFTEN

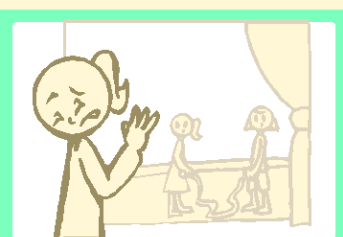
15 Less interested in friends



NEVER

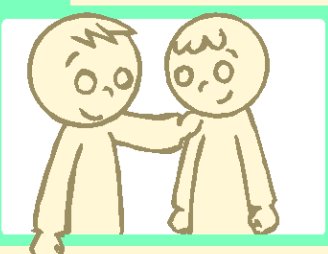


SOMETIMES

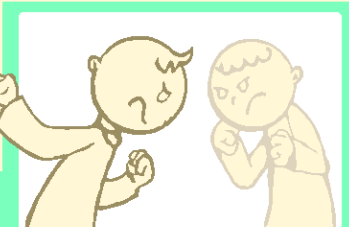


OFTEN

16 Fights with other children



NEVER

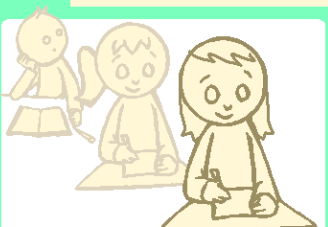


SOMETIMES

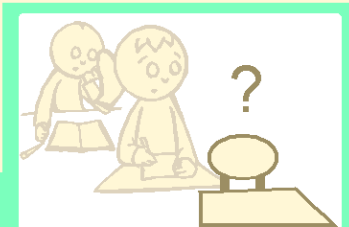


OFTEN

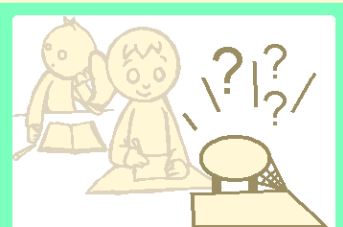
17 Absent from school



NEVER



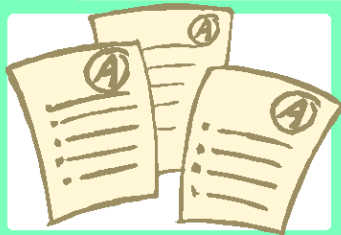
SOMETIMES



OFTEN



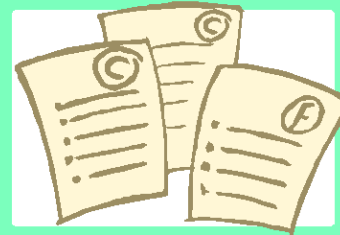
18 School grades dropping



NEVER

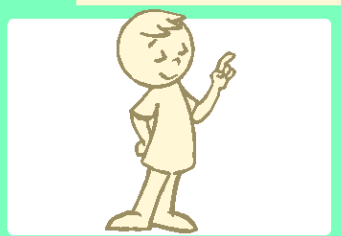


SOMETIMES



OFTEN

19 Is down on him or herself



NEVER

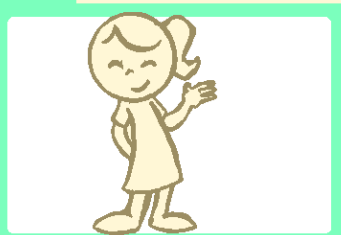


SOMETIMES

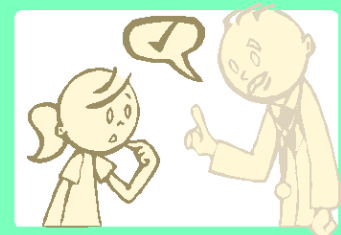


OFTEN

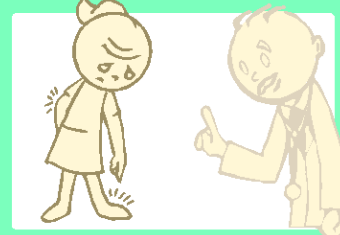
20 Visits the doctor with doctor finding nothing wrong



NEVER



SOMETIMES

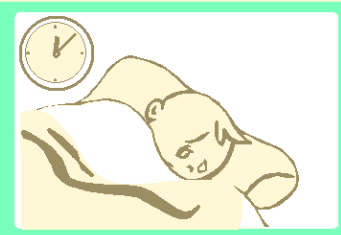


OFTEN

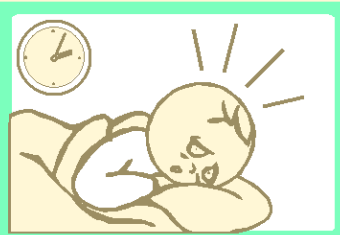
21 Has trouble sleeping



NEVER

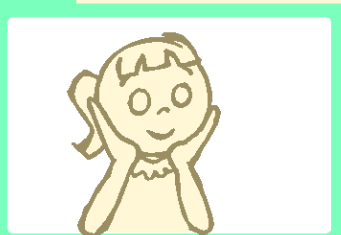


SOMETIMES

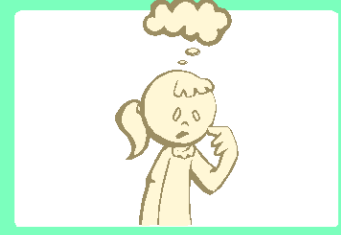


OFTEN

22 Worries a lot



NEVER

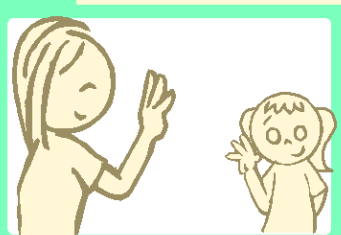


SOMETIMES

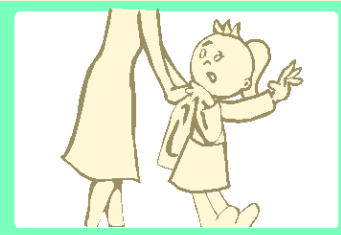


OFTEN

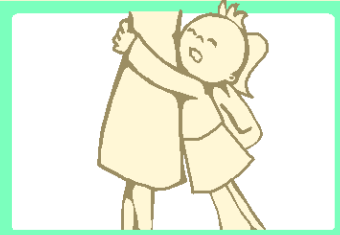
23 Wants to be with you more than before



NEVER



SOMETIMES



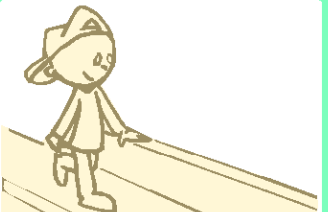
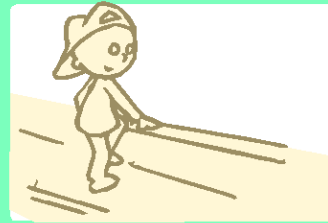
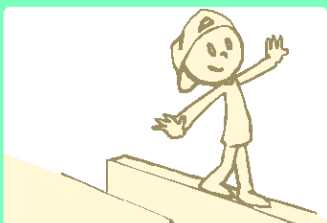
OFTEN






24 Feels he or she is bad

	NEVER		SOMETIMES		OFTEN
---	-------	---	-----------	---	-------

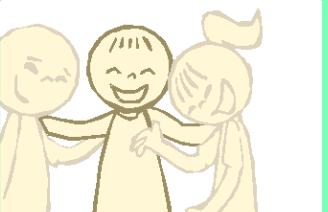
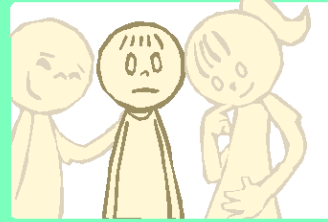
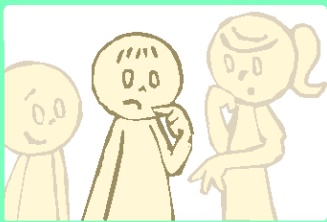
25 Takes unnecessary risks

	NEVER		SOMETIMES		OFTEN
---	-------	---	-----------	---	-------

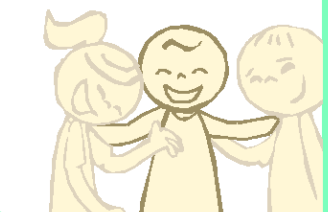
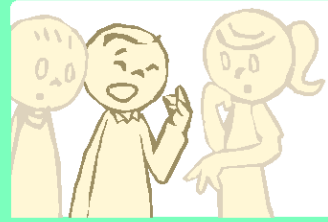

26 Gets hurt frequently

	NEVER		SOMETIMES		OFTEN
--	-------	--	-----------	--	-------



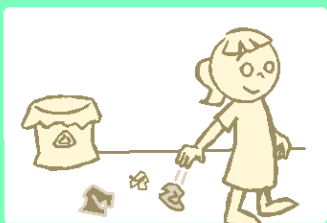
27 Seems to be having less fun

	NEVER		SOMETIMES		OFTEN
---	-------	---	-----------	---	-------

28 Acts younger than children his or her age

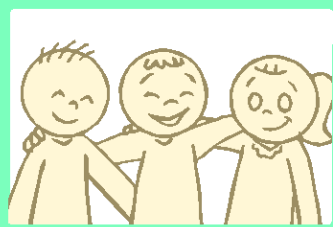
	NEVER		SOMETIMES		OFTEN
---	-------	---	-----------	---	-------

29 Does not listen to rules

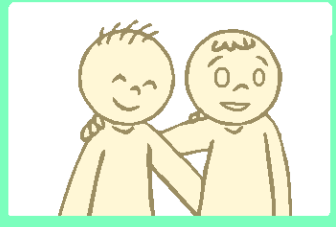
	NEVER		SOMETIMES		OFTEN
---	-------	---	-----------	---	-------



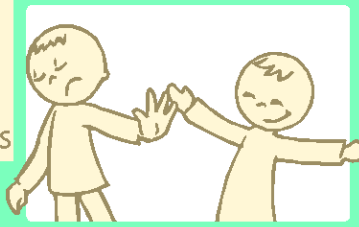
30 Does not show feelings



NEVER

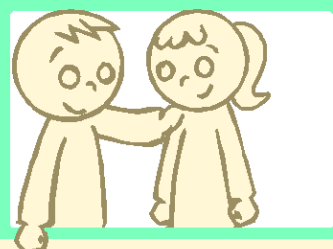


SOMETIMES

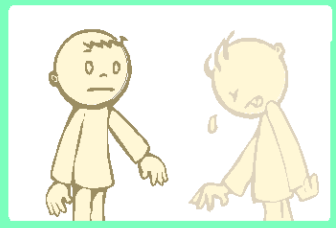


OFTEN

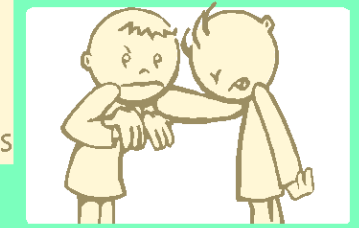
31 Does not understand other people's feelings



NEVER

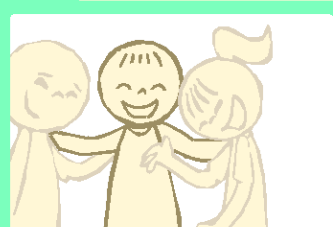


SOMETIMES

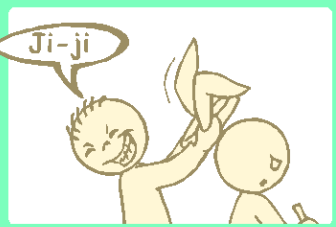


OFTEN

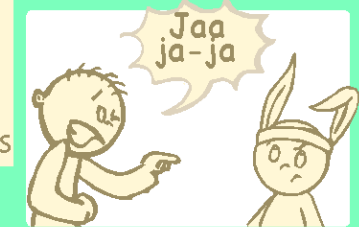
32 Teases other



NEVER



SOMETIMES

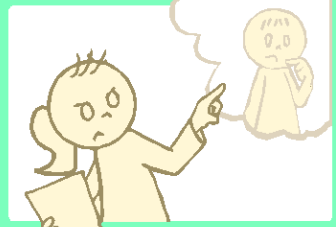


OFTEN

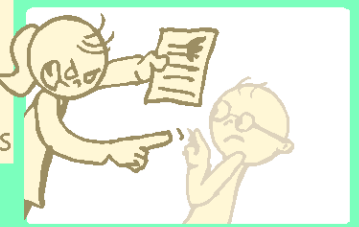
33 Blames others for his or her troubles



NEVER

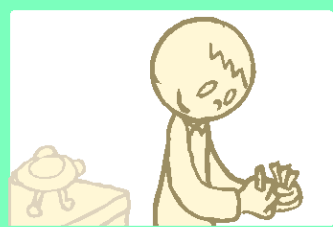


SOMETIMES



OFTEN

34 Takes things that do not belong to him or her



NEVER

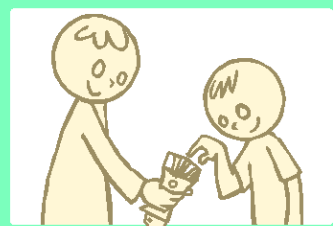


SOMETIMES

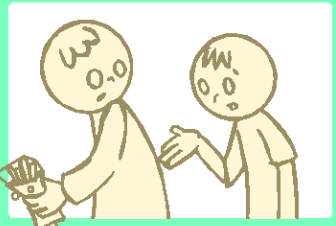


OFTEN

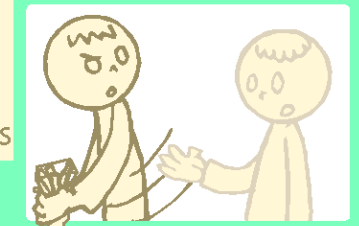
35 Refuses to share



NEVER



SOMETIMES



OFTEN