

Personalized care

If you are at high risk for developing skin cancer due to a solid organ or bone marrow transplant or have a suppressed immune system, you need an advanced level of care.

Who we are

We are highly experienced dermatologists who your doctor has entrusted to create a personalized skin cancer prevention and treatment plan that fits your individual needs. We monitor you closely and aim to treat any potential non-melanoma, basal or squamous cell cancers early – before it is able to cause serious health problems.

The high risk skin cancer clinic (non-melanoma) at Massachusetts General Hospital provides an advanced level of care

High Risk Skin Cancer Clinic Mass General Hospital

Department of Dermatology
50 Staniford Street
Boston, MA 02114
T 617 726 6097
F 617 726 7768

Near public transit | Handicapped accessible
www.massgeneral.org/high-risk-skin-cancer

We welcome referrals

**Mass General Brigham
HealthCare Provider Referrals**
Please place a referral order through EPIC
Clinicals for:
MGH High Risk Dermatology

**Referrals from outside of the
Mass General Brigham network**
Please contact us directly:
T 617 726 6097
F 617 726 7768

 **Massachusetts General Hospital**
Founding Member, Mass General Brigham

Department of Dermatology

High Risk Skin Cancer Clinic



Specialty care for the prevention and treatment of non-melanoma skin cancer for high risk patients

 **Massachusetts General Hospital**
Founding Member, Mass General Brigham

Who we serve

Your doctor referred you to our clinic because you are at a higher risk of developing skin cancer if you:

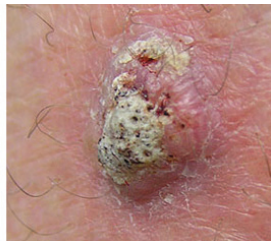
- are a candidate for an organ or bone marrow transplant, or have received a transplant
- have leukemia or lymphoma
- have been diagnosed with four (4) or more skin cancers within the past year
- have a genetic disorder with a tendency to increase the risk of skin cancer
- are on long-term medications that suppress the immune system

What we do

We offer advanced treatments for basal cell and squamous cell skin cancers. These cancers are non-melanoma, yet if not diagnosed and treated early, they can spread to other areas of the body.



Basal cell cancer



Squamous cell cancer

Basal cell skin cancer often looks like open sores, red or pink patches, or bumps. Squamous cell skin cancer can appear as rough, pink, scaly patches that can bleed.

What we offer

Expert diagnosis

- Highly specialized and experienced doctors
- Early detection to facilitate treatment

Personalized care

- See patients more often
- Allow more time for each visit
- Easy to get appointments
- Do a head to toe skin examination
- Take a team approach to your care
- Focus on preventing future skin cancers

Advanced treatments

- The latest available treatments, such as chemo wraps and photodynamic therapy, are part of our every day treatment plans.
- If needed, we have Boston's most experienced Mohs surgeons as part of our clinic staff.

Our preventative services and advanced treatment plans include:

Chemo wraps

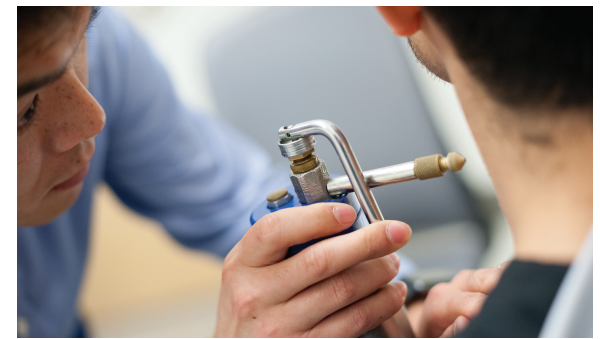
To help reduce the need for surgery, we apply topical medicine and wrap the skin lesion for one week. Not all clinics offer this treatment.

Photodynamic therapy

We modify standardized light treatments for your specific skin type and condition.

Oral medications

We are familiar with up-to-date medications and treatments so we can tailor treatment to your condition and overall health.



Cryosurgery

Also called freezing, to eliminate abnormal skin cells.

Topical creams and gels

Newer generations of creams and gels are available to aid in treating some skin cancers.

Surgery

If surgery is needed, we offer Mohs Micrographic Surgery, which is a highly precise procedure that removes tissue layer by layer to remove cancerous cells, while sparing as much healthy skin as possible.

In rare instances when the cancer has spread to the lymph nodes, we work together with a multi-disciplinary team of doctors that includes oncologists, radiologists, and head and neck doctors.

Why see us

Your skin cancer may be more aggressive and could even be deadly.

If identified early, these cancers are highly treatable. For best results, make an appointment with our clinic as soon as possible.

Our care plans focus on prevention, early detection, and timely treatment.

*Photos were taken prior to the Universal Mask Policy.